

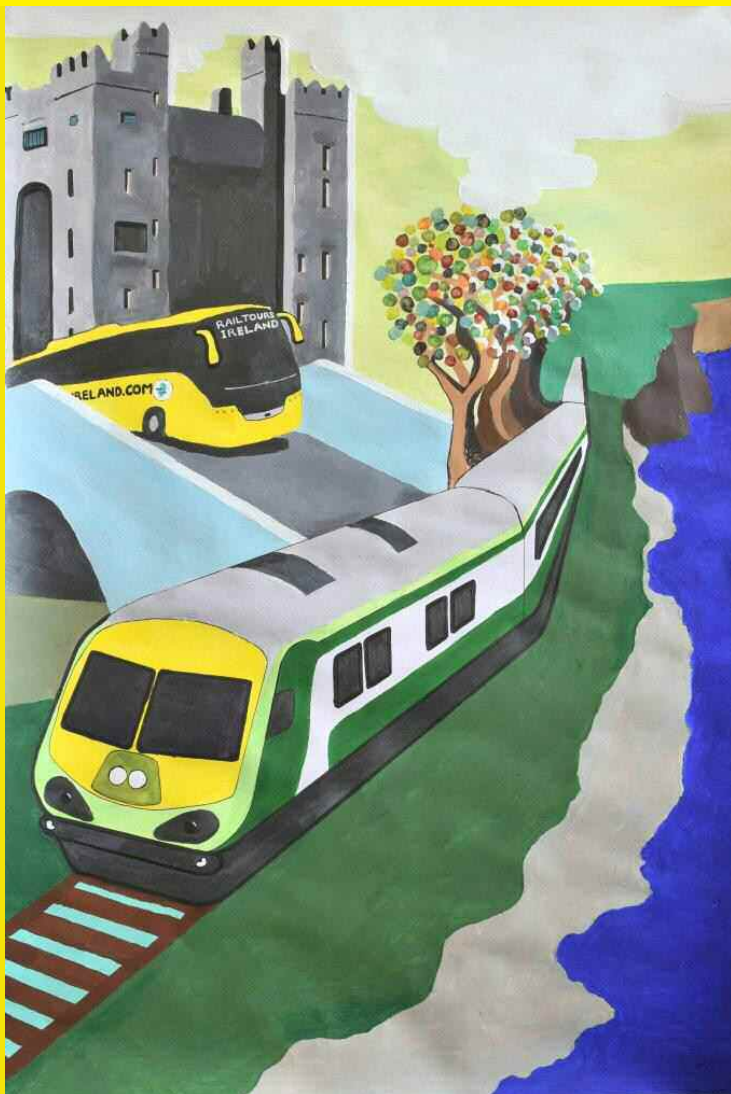
RAILTOURS IRELAND

**RAILTOURS
IRELAND**

First Class!

Hosted Railtours for
the Independent Traveller
RAILTOURSIRELAND.COM

CAR FREE- CARE FREE!



ONE DAY TOURS TO ELEVEN DAY TOURS

BOOK TODAY - TRAVEL TOMORROW!

Jump into 
Ireland

And in association with



Iarnród Éireann
Irish Rail



**IRELAND'S
ANCIENT EAST™**
Wonder Through Time

WILD ATLANTIC WAY
SLY AN ATLANTIC PHASE

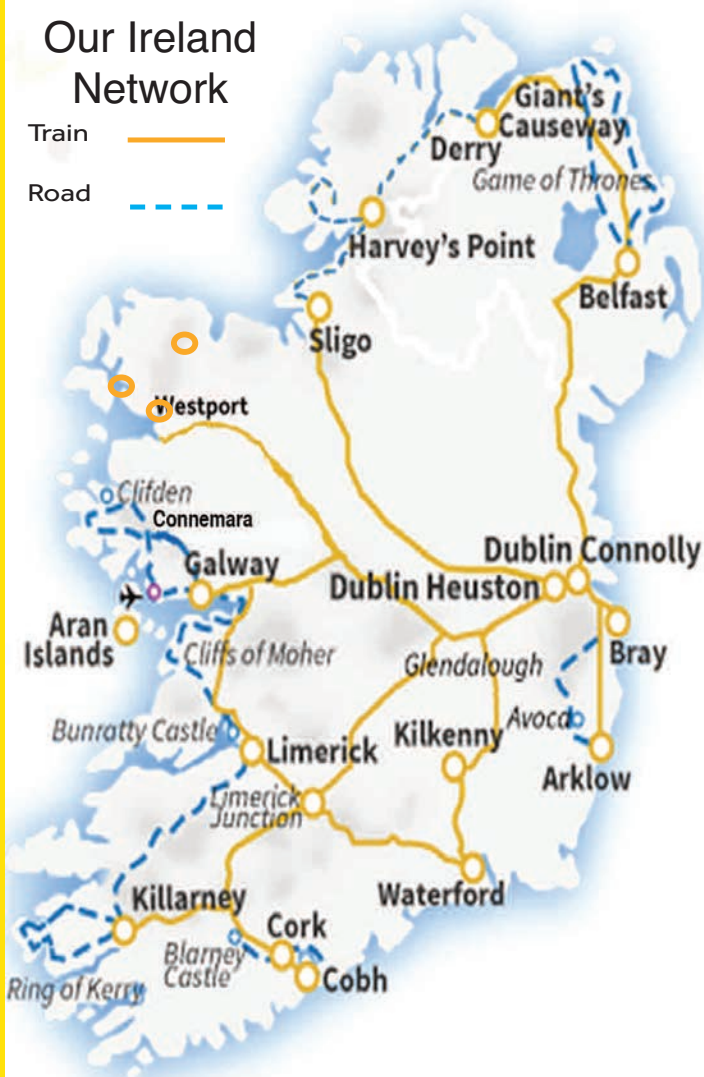


Our comfortable InterCity trains

Our Ireland Network

Train ———

Road - - - -



Our Luxury Coaches



Cliffs of Moher

One-Day Tour: DH06

Limerick, The Cliffs of Moher, Bunratty Castle, The Burren & Galway Bay

Check in Dublin Heuston Station for 07.00hrs departure of InterCity train to Limerick. (breakfast/snack car available). This day tour will take you to the most popular visitor attraction outside of Dublin – the Cliffs of Moher, on the Wild Atlantic Way. Sit back and relax as your train glides through the heart of Ireland, an ancient landscape littered with castles. We join our coach at Limerick, which sits on the mighty River Shannon, to visit Bunratty Castle & Folk Park Village en route to our lunch stop, Gus O'Connor's famous seafood pub in Doolin (not included). Then, the spectacular Cliffs of Moher, some of the highest sea cliffs in Europe. Enjoy a short hike along the cliff path rising 215 metres above the pounding Atlantic Ocean. We continue along the Wild Atlantic Way through the lunar landscape of the Burren region, a UNESCO Geo-Park famous for its fauna and flora. We then head along the shores of Galway Bay for a flavour of Galway City, traffic permitting. We join your InterCity train at Galway Ceánnt Station, for our train to Dublin at 19.20hrs departure. Arriving at Dublin Heuston Station 21.45hrs (9.45pm).

THE ESSENTIALS

Departs: Daily - Monday to Saturday year round

Price: Adult €119 Student €99

Check In: For 07.00hrs train to Limerick
(20 mins prior to departure)

Departure Point: Information Desk – Heuston Station

Return: 21.45hrs (9.45pm)

Included:

- Rail Travel - Dublin to Limerick
Galway to Dublin in reserved cars
- Hosted tour throughout
- Bunratty Castle & Folk Park
- Cliffs of Moher



Bunratty Castle





Blarney Castle

One-Day Tour: DH02

Cork, Blarney Castle, Cobh & the Titanic Story

Check in Dublin Heuston Station for 07.00hrs departure of InterCity train to Cork (breakfast/snack car available). Kiss the Blarney Stone! Travel south from Dublin to Cork, Ireland's southern capital. Enjoy a visit to the world renowned Blarney Castle & Gardens and the Queenstown Story at Cobh, the Titanic's last port of call and the rescue harbour for the Lusitania survivors in 1915. After a scenic train journey through the ancient Irish landscape dotted with castles, we transfer by coach to Blarney Castle where we can kiss the famous Blarney Stone known as the "Stone of Eloquence". Enjoy shopping time and lunch (not included) at Blarney Woollen Mills and village before heading to our next destination, via coach. We visit Cobh – the embarkation point for generations of Irish emigrants to the new world, including passengers for the Titanic. Experience the "Queenstown Story". Enjoy a scenic rail journey from Cobh to Cork Kent Station to connect with your InterCity train travelling back to Dublin. Arriving at Dublin Heuston Station at 20.00hrs (8.00pm).

THE ESSENTIALS

Departs:	Daily - Monday to Saturday year round
Price:	Adult €119 Student €99
Check-in :	For 07.00hrs train to Cork (20 mins before departure)
Departure Point:	Information Desk – Heuston Station
Return:	20.00hrs (8.00pm)
Included:	<ul style="list-style-type: none"> • Rail Travel - Dublin to Cork Cobh to Cork, Cork to Dublin in reserved cars • Hosted tour throughout • Blarney Castle and Gardens • Cobh Heritage Centre

Cobh





Gap of Dunloe

One-Day Tour: DH05GD

The Gap of Dunloe - Killarney's Lakes, Islands and Mountain Passes

Check in Dublin Heuston Station for 07.00hrs depart of InterCity train to Killarney. On arrival in Killarney at 10.15hrs, transfer from Killarney to Ross Castle. From here the tour begins by traditional open boat on Lough Leane. Passing Innisfallen, Ross Island and under the Bricin Bridge towards the Meeting of the Waters at the old Weir Bridge. The tour continues along the Long Range towards Eagles Nest Mountain and onto the Upper Lake. A stop over here for a light snack and refreshments at Lord Brandans cottage (not included). Then travel by pony and trap through the Black Valley and Gap of Dunloe finishing up at Kate Kearneys cottage. At "Kate's" Traditional Irish Pub you will enjoy the tradition of hospitality which is the perfect finish to a day of memorable sight seeing. Transfer from here at 16.15hrs (4.15pm) to Killarney Railway Station, arriving at 16.35hrs. Dublin train departs at 17.37 hrs (5.37pm) so there is normally time for a quick flavour of Killarney town centre which is close to the station. Arriving at Dublin Heuston Station 21.00hrs (9.00pm).

Please note: Guests need to be prepared for varying weather conditions and rain gear is essential to enjoy this tour. Regretfully this tour is not suitable for guests with physical disabilities.

THE ESSENTIALS

Departs:	Daily Monday to Saturday April-Oct (inc)
Price:	Adult €159 Student €149
Check-in:	For 07.00hrs train to Killarney (20 mins before departure)
Departure Point:	Information Desk – Heuston Station
Return:	21.00hrs (9.00pm)
Included:	<ul style="list-style-type: none"> • Rail travel - Dublin to Killarney in reserved cars/seats • Hosted tour throughout • Gap of Dunloe tour including 14 mile voyage across all three lakes of Killarney • Seven mile pony and trap trek • All transfers

Lakes of Killarney



One-Day Tour: DC10

The Giant's Causeway, Glens of Antrim & Wild Atlantic Coast

Check in Dublin Connolly Station for 07.35hrs departure of newly refurbished Enterprise Express service to Belfast (breakfast/snack car available). The famous Causeway Coastal Route Drive, the Giants Causeway & Carrick-a-Rede Rope Bridge all in one day! We arrive in Belfast and then travel by coach north from Belfast along the famous Antrim Coast Road through Ballycastle en route to the Carrick-a-Rede Rope Bridge. Our lunch stop is usually in a traditional coastal pub in the area (not included). We continue along the Causeway Coast, one of the most magical drives in Europe, to the stunning Giant's Causeway. Spend some time climbing over the ancient stones and enjoying the myths and legends associated with this famous attraction. Next we enjoy a photo stop at the huge bastion of Dunluce Castle, then back to Belfast for a short tour before returning back to Dublin. Arriving at Dublin Connolly Station 22.15hrs (10.15pm). 20.15 (8.15pm) during Winter months.



Giant's Causeway



Carrick-a-rede
Rope Bridge



THE ESSENTIALS

Departs:	Daily - Monday to Saturday year round
Price:	Adult €119 Student €99
Check-in :	For 07.35hrs Enterprise Express to Belfast (20 mins before departure)
Departure Point:	Information Desk – Connolly Station
Return:	22.15hrs (10.15pm) - Jan to mid March & Nov Dec 20.15 (8.15pm)
Included:	<ul style="list-style-type: none">• Rail Travel - Dublin to Belfast return in reserved cars• Hosted tour throughout• Carrick-A-Rede Rope Bridge Crossing• Dunluce Castle photostop• Giant's Causeway

One-Day Tour: DC10T Titanic Belfast and Belfast City

Check in Dublin Connolly Station for 07.35hrs departure of newly refurbished Enterprise Express service to Belfast (breakfast/snack car available). On arrival in Belfast your tour host provides you with tickets for the Hop-on-Hop-off City Tour. You are then free to explore this fascinating city at your leisure. See close up the world famous political murals depicting "The Troubles" or visit Crumlin Road Gaol and see the condemned cell. Write your thoughts on the Peace Wall alongside those of Bill Clinton and the Dalai Lama. Visit Titanic Belfast, a monument to Belfast's maritime heritage on the site of the former Harland & Wolff shipyard in the city's Titanic Quarter where the RMS Titanic was built. Moored very close to the Titanic Visitor Centre is the very last original White Star Line ship; the SS Nomadic, which is now open to the public (admission not included). Return to Dublin on any train. Last train is at 20.05 (8.05pm) arriving 22.15 (10.15p.m.)



Titanic Belfast



Hop On - Hop Off
tour of Belfast



THE ESSENTIALS

Departs:	Daily - Monday to Saturday year round
Price:	Adult €119
Check-in :	For 07.35hrs Enterprise Express to Belfast (20 mins before departure)
Departure Point:	Information Desk – Connolly Station
Return:	22.15hrs (10.15pm) Earlier trains available
Included:	<ul style="list-style-type: none">• Rail Travel - Dublin to Belfast return in reserved cars• Hop On - Hop Off City Tour• Titanic Belfast admission

SIT BACK AND RELAX as your comfortable train glides through beautiful Irish scenery



DAY TOUR PLUS OPTIONS

have a sleep in and get a later train!

Not a morning person?

Try our overnight tours with later departures. Take an afternoon train, and then overnight in one of our great Irish cities or towns and join our day tour the following day.

DH02AN Day Tour Plus - Cork City & Blarney & Cobh

Depart Dublin at 14:00hrs and travel to Cork City – Cork City, the original foodie capital of Ireland, has excellent restaurants, bars and nightlife to discover. Overnight in a city centre 4* hotel and join the Blarney Castle, Cobh & the Titanic Story Day Tour the following day.

DH05AN Day Tour Plus - Killarney & The Ring Of Kerry

Depart Dublin at 15:00hrs and travel to Killarney, the gateway to the 'Kingdom'. Killarney is a buzzing town with lots of traditional music outpouring from the pubs and restaurants. Overnight in a city centre 4* hotel and join the Ring of Kerry Day Tour the following day.

DH04AN Day Tour Plus - Connemara & Galway Bay

Depart Dublin at 13:25hrs and travel to Galway, the gateway to the West of Ireland. Enjoy some local seafood in one of the many restaurants in Galway. Overnight in a city centre 4* hotel and join the Connemara Day Tour the following day.

DH06AN Day Tour Plus - Limerick City & the Cliffs of Moher

Depart Dublin at 15:25hrs and travel to Limerick, a lady of a city, with a lively mix of sport, culture and great pubs thrown in for good measure. Overnight in a city centre 4* hotel and join the Cliffs of Moher Day Tour the following day.

DC10AN Day Tour Plus - Belfast City & Giants Causeway

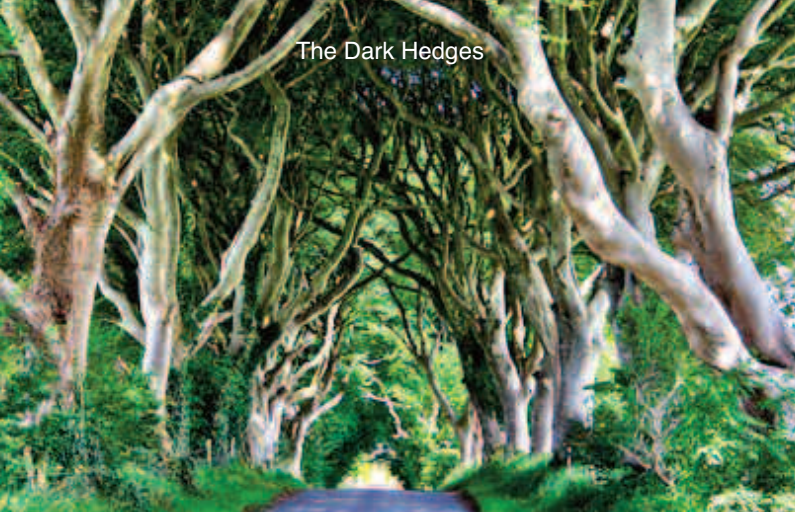
Depart Dublin at 13:20hrs and travel to Belfast, the capital city of Northern Ireland. Small but with a big heart, super-cool Belfast is one of Europe's true renaissance cities. Overnight in a city centre 4* hotel and join our Giants Causeway Tour the following day.

Please visit www.railtoursireland.com for further details on our Day Tour Plus Options

THE ESSENTIALS

- ✓ **Afternoon departures** (Check In 20 mins before departure)
- ✓ **All tours are ADULT €229pps**
except DC10AN is ADULT €239pps
- ✓ **All round trip train tickets**
- ✓ **Reserved seats on the train**
- ✓ **Overnight four star Hotel accommodation**

The Dark Hedges



Two-Day Tour: DC10G

Belfast & Game of Thrones & Giants Causeway

Day 1

Check in Dublin Connolly Station for 07.35hrs departure of newly refurbished Enterprise Express service to Belfast (breakfast available). On arrival in Belfast your tour host provides you with tickets for the Hop-on-Hop-off City Tour. You are then free to explore this fascinating city at your leisure. See close up the world famous political murals depicting "The Troubles" or visit Crumlin Road Gaol. Write your thoughts on the Peace Wall alongside those of Bill Clinton and the Dalai Lama. Visit Titanic Belfast, a monument to Belfast's maritime heritage on the site of the former Harland & Wolff shipyard in the city's Titanic Quarter where the RMS Titanic was built. Moored very close to the Titanic Visitor Centre is the very last original White Star Line ship; the SS Nomadic, which is now open to the public (admission not included). Overnight: 4* Hotel in downtown Belfast including full Irish breakfast (Ulster Fry).

Day 2

At around 09.00hrs we depart Belfast and travel north along the scenic Causeway Route on our Game of Thrones tour where we visit seven iconic sites from Series 1 to 4. We visit the Caves where Melisandre of Asshai gave birth to her "shadow baby" and Ballycastle, the native home of Lady Catelyn Stark and Varys. A real wow is The Kings Road locally known as The Dark Hedges, where Arya Stark escaped from Kings Landing dressed as a boy. We break for Lunch (not included) at the cosy Fullerton Arms in Ballintoy/Pyke Harbour where several major scenes were filmed. The last stop is at the renowned Giant's Causeway, a UNESCO World Heritage Site, and then back to Belfast for a short tour before returning to Dublin. Arriving at Dublin Connolly Station 22.15hrs (10.15pm) in winter return at 20.15.

THE ESSENTIALS

Departs Dublin:	Every Tuesday, Wednesday and Friday all year
Price:	Adult €329pps Student €296pps
Check-in:	For 07.35hrs Enterprise Express to Belfast (20 mins before departure)
Departure Point:	Information Desk – Connolly Station
Return:	22.15 (10.15pm) Winter: 20.15 (8.15pm)
Included:	<ul style="list-style-type: none">• Rail Travel - Dublin to Belfast return in reserved cars/seats• Hosted tour throughout• Hop On - Hop Off City Tour• Titanic Belfast admission• Game of Thrones tour



The Causeway Coast



Two-Day Tour: DH03

Blarney Castle, Cobh, Killarney & Ring of Kerry

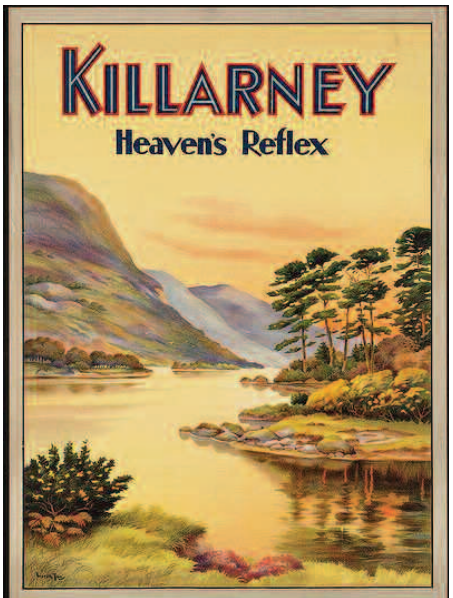
Day 1

Check in Dublin Heuston Station for 07.00hrs departure of InterCity train to Cork (breakfast/snack car available). Enjoy a visit to the world-renowned Blarney Castle & Gardens and the Queenstown Story at Cobh, the Titanic's last port of call and the rescue harbour for the Lusitania survivors in 1915. After a scenic train journey through the ancient Irish landscape dotted with castles, we transfer by coach to Blarney Castle where we can kiss the famous Blarney Stone known as the "Stone of Eloquence".

Enjoy shopping time and lunch (not included) at Blarney Woollen Mills and village before heading to our next destination, via coach. We visit Cobh – the embarkation point for generations of Irish emigrants to the new world, including passengers for the Titanic. Experience the "Queenstown Story". Enjoy a scenic rail journey from Cobh to Cork for transfer to Killarney. Overnight in Killarney four star standard hotel.

Day 2

The world-renowned Ring of Kerry, with its overwhelming mountains and seascapes, is one of Ireland's most scenic delights. We travel by coach around the 100mile/179km long Ring of Kerry, where every bend reveals some of the most spectacular scenery in Ireland set between the Kerry mountains, 'The Macgillycuddy's Reeks', and the Wild Atlantic coastline. Our day starts in Killarney as we then sweep along the north side of the Iveragh peninsula. Then it's onto the south side, through the villages of Waterville and Sneem, and into the pristine Killarney National Park. Then, we drop down alongside the Black Valley and Moll's Gap, stopping at Ladies View. We return to Killarney to connect with the train back to Dublin. Arriving at Dublin Heuston Station 21.00hrs (9.00pm).



THE ESSENTIALS

Departs: Daily Monday to Saturday year round

Price: Adult €309pps Student €279pps

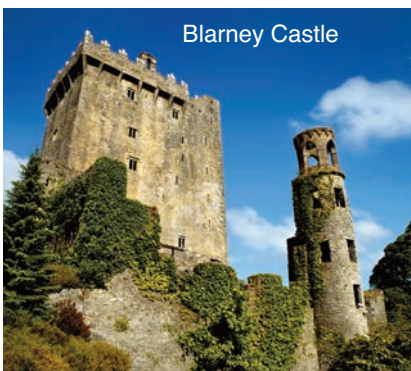
Check-in: For 07.00 hrs train to Cork
(20 mins before departure)

Departure Point: Information Desk – Heuston Station

Return: 21.00 (9.00pm)

Included:

- Rail Travel-Dublin/Cork, Cobh/Killarney, Killarney to Dublin in reserved cars/seats
- All Accommodation
- Hosted tour throughout
- Blarney Castle and Gardens
- Cobh Heritage Centre
- Ring of Kerry Tour



Blarney Castle



Three-Day Tour: DH36

Cork, Blarney Castle, Ring of Kerry, Cliffs of Moher

Day 1

Check in Dublin Heuston Station for 07.00hrs departure of InterCity train to Cork (breakfast/snack car available). Enjoy a visit to the world-renowned Blarney Castle & Gardens and the Queenstown Story at Cobh, the Titanic's last port of call and the rescue harbour for the Lusitania survivors in 1915. After a scenic train journey through the ancient Irish landscape dotted with castles, we transfer by coach to Blarney Castle where we can kiss the famous Blarney Stone known as the "Stone of Eloquence". Enjoy shopping time and lunch (not included) at Blarney Woollen Mills and village before heading to our next destination, via coach. We visit Cobh – the embarkation point for generations of Irish emigrants to the new world, including passengers for the Titanic. Experience the "Queenstown Story". Enjoy a scenic rail journey from Cobh to Cork for transfer to Killarney. Overnight in Killarney at a four-star standard hotel.

Day 2

The world renowned Ring of Kerry, with its overwhelming mountains and seascapes, is one of Ireland's most scenic delights. We travel by coach around the 100mile/179km long Ring of Kerry, where every bend reveals some of the most spectacular scenery in Ireland set between the Kerry mountains, 'The Macgillycuddy's Reeks', and the Wild Atlantic coastline. Our day starts in Killarney as we then sweep along the north side of the Iveragh peninsula. Then it's onto the south side, through the villages of Waterville and Sneem, and into the pristine Killarney National Park. Enjoy views of The Skellig Islands where Star Wars "The Force Awakens" was recently filmed. Then we drop down alongside the Black Valley and Moll's Gap, stopping at Ladies View. Lunch stop at traditional Irish pub on this scenic journey (not included). We return to Killarney for your second overnight stay.

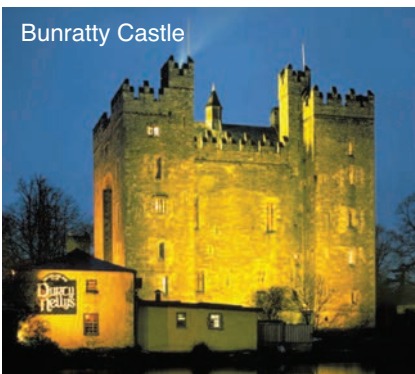
Day 3

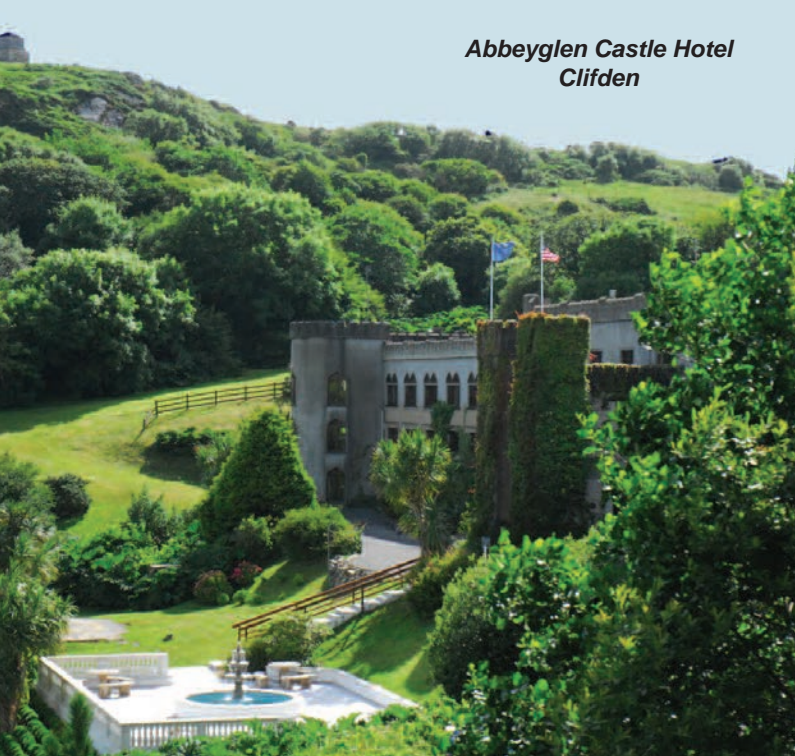
07.00hrs transfer by road from Killarney to Limerick passing through the lovely village of Adare. In Limerick we have a short tour of the treaty city and setting for the movie "Angela's Ashes". We head north to Bunratty Castle and Folk Park. Our next stop is at a traditional Irish pub, O'Connor's of Doolin, with its reasonably priced seafood and pub grub - try the chowder (not included). It is a short drive from here to the majestic Cliffs of Moher; from here, we enter the unique lunar landscape of the Burren passing by Black Head before heading along the shores of Galway Bay (our route is regarded as one of Europe's top ten coastal drives). Guests have a short time in Galway City, traffic permitting, before returning by train to Dublin. Arriving at Dublin Heuston Station 21.45hrs (9.45pm).

THE ESSENTIALS

Departs :	Monday to Thursday and Saturday
Price:	Adult Low €559pps High €579 pps High Season: June to September
Check-in:	For 07.00am train to Cork (20 mins before departure)
Departure Point:	Information Desk – Heuston Station
Return:	21.45 (9.45pm)
Included:	<ul style="list-style-type: none">• Rail Travel-Dublin/Cork, Cobh/Killarney, Galway to Dublin in reserved cars/seats• All Accommodation• Hosted tour throughout• Blarney Castle and Gardens• Cobh Heritage Centre• Ring of Kerry Tour• Bunratty Castle and Folk Park• Cliffs of Moher

Bunratty Castle





Eleven-Day Tour: DH3711910HP

Titanic Rail Trail & Wild Atlantic Way including Donegal

Travel South, South West, West, East, North and North West. An eleven day tour that encompasses almost everything that we do (and we can add on Waterford as an extra day tour if you wish). We include the highlights of Ireland with the theme of the ill fated Titanic story. We visit Cork and Blarney Castle and Cobh near Cork City, the ships last port of call. We include Belfast where she was built, we explore Clifden in Connemara, where Jack Phillips, the Titanic's wireless operator worked for Marconi before the fatal voyage. This tour also takes in Ireland's most famous attractions such as The Cliffs of Moher, Blarney Castle, The Ring of Kerry, Bunratty Castle, The Giant's Causeway and Galway Bay on the wild Atlantic Coast and now we have added the Hills of Donegal. The tour finally returns to Dublin from Sligo town in Irelands North West. The Wild Atlantic Way and Causeway coast are well covered in this very comprehensive tour.

Day 1: Dublin to Blarney Castle, Cobh and Killarney

Overnight Stay: Killarney Town Centre

Day 2: Ring Of Kerry Tour

Overnight Stay: Killarney Town Centre

Day 3: Limerick, Cliffs of Moher, Galway

Overnight Stay: Galway City Centre

Day 4: Aran Islands Tour

Overnight Stay: Galway City Centre

Day 5: Connemara and Kylemore Abbey

Overnight Stay: Clifden Hotel

Day 6: Clifden to Dublin

Overnight Stay: Dublin City Centre

Day 7: Discover Dublin Free Day

Use your Hop On - Hop Off

Overnight Stay: Dublin City Centre

Day 8: Giants Causeway and Carrick-a-Rede Rope Bridge

Overnight Stay: Belfast City Centre

Day 9: Belfast City and Titanic Belfast

Overnight Stay: Harvey's Point Hotel, Co. Donegal, Dinner, Room & Full Breakfast

Day 10: Harvey's Point

Overnight Stay: Harvey's Point Hotel, Co. Donegal, Dinner, Room & Full Breakfast

Day 11: Slieve League Cliffs, W B Yeats graveside and train journey back to Dublin - Overnight Stay: Dublin City Centre



THE ESSENTIALS

Departs : Monday, Wednesday, Thursday and Sat

Price: **Adult Low €2689pps High €2869 pps**
High Season: June to September

Check-in: For 07.00am train to Cork
(20 mins before departure)

Departure Point: Information Desk – Heuston Station

Return: 18.00 (6.00pm) - Connolly Station

Included:

Return Rail Travel

Reserved Seats on the train

Railtours Ireland Host throughout

Visitor Attraction Admissions

Transfer to Inis Mór the largest of the Aran Islands

2 Nights Killarney 4* Hotel

2 Nights Galway 4* Hotel

1 Night Clifden 4* Hotel

3 Nights Dublin 4* Hotel

1 Night Belfast 4* Hotel

2 Nights Harvey's Point, Co. Donegal - Dinner both nights

Full Irish Breakfast Included

One-Day Tour: DH05

The Ring of Kerry

Check in Dublin Heuston Station for 07.00hrs for your Intercity train to Killarney (breakfast/snack car available). Enjoy the train ride through the heart of Ireland to Killarney; the gateway to The Ring of Kerry. We continue by coach around the 100mile/179km long Ring of Kerry, where every bend reveals some of the most spectacular scenery in Ireland set between the mountains of Kerry, 'The Macgillicuddy's Reeks', and the Wild Atlantic coastline. Our day starts in Killarney as we then sweep along the north side of the Iveragh peninsula. Then it's onto the south side, through the villages of Waterville and Sneem, and into the pristine Killarney National Park. Enjoy the views of The Skellig Islands, where Star Wars "The Force Awakens" was recently filmed. Then we drop down alongside the Black Valley and Moll's Gap, stopping at Ladies View. Lunch stop will be at a traditional Irish Pub (not included) on this scenic journey. We return to Killarney for our train back to Dublin. Arriving at Dublin Heuston Station 21.00hrs (9.00pm).



Sheep Dog Demonstration on Ring of Kerry



On Ring of Kerry



THE ESSENTIALS

Departs: Daily - Monday to Saturday year round

Price: Adult €119 Student €99

Check-in: For 07.00hrs train to Killarney
(20 mins before departure)

Departure Point: Information Desk – Heuston Station

Return: 21.00hrs (9.00pm)

Included:

- Rail Travel - Dublin to Killarney return in reserved cars/seats
- Hosted tour throughout
- Ring of Kerry scenic tour

One-Day Tour: DH11

Aran Islands & Scenic Flight over Galway Bay

Check in Dublin Heuston Station for 07.35hrs departure of InterCity train to Galway Ceánnt Station. This tour offers a unique opportunity to visit Inis Mór, the largest of the three Aran Islands. Set on the west coast of Ireland in the mouth of Galway Bay, Inis Mór is a bastion of traditional Irish language, culture and music, unique in its geology, archaeology and history. Upon arriving into Galway we take a short transfer to Connemara Airport for a short return flight to Inis Mór (meaning big island). We enjoy a tour of the island including a visit to the fortress of Dún Aengus (admission included), the most magnificently and dramatically situated Celtic Stone fort in Western Europe, standing precariously on the edge of a 100-meter-high cliff overlooking the Atlantic Ocean. We arrive back at the village of Kilronan with time for lunch (not included) or visit the Aran Sweater Market. We return to Galway with some time to explore the city centre. Arriving at Dublin Heuston Station 21.45hrs (9.45pm).

** should weather conditions be such as to curtail flights you will be taken on an alternative tour to Connemara and refunded the difference. No further refund available should you decide not to go to Connemara for any reason, this is a condition of booking.*



Flying to
Inis Mór



Dún Aengus



THE ESSENTIALS

Departs: Daily - Monday to Saturday year round

Price: Adult €159 Student €149

Check-in: For 07.35hrs train to Galway
(20 mins before departure)

Departure Point: Information Desk – Heuston Station

Return: 21.45hrs (9.45pm)

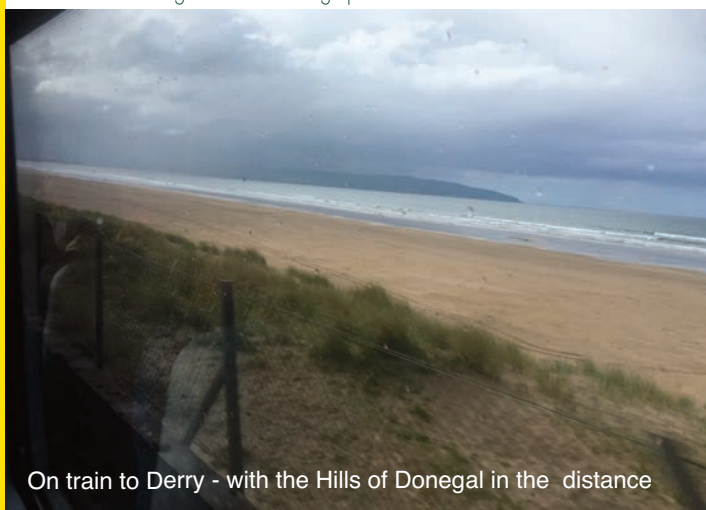
Included:

- Rail Travel - Dublin to Galway return in reserved cars/seats
- Transfers to and from Connemara Airport
- Hosted tour throughout
- Aer Arann Flight / Tour of Inis Mór

Hills of Donegal also visiting Belfast / Titanic

We are delighted to offer an independent tour to the luxury Harvey's Point Hotel, voted No. 1 in Ireland on Trip Advisor! for the past five years. Situated in County Donegal "Ireland's Coolest* County"

*according to National Geographic



On train to Derry - with the Hills of Donegal in the distance

Three-Day Independent Tour: DC10TDHP

(includes all rail, transfers, Titanic and two nights Dinner, Bed and Breakfast)

The Hills of Donegal via Belfast/Titanic and Derry

Day 1

Check in Dublin Connolly Station for 07.35hrs departure of newly refurbished Enterprise Express service to Belfast (breakfast/snack car available). On arrival in Belfast your tour host provides you with tickets for the Hop-on-Hop-off City Tour. Use this ticket to take you to Titanic Belfast, a monument to Belfast's maritime heritage on the site of the former Harland & Wolff shipyard in the city's Titanic Quarter where the RMS Titanic was built. Moored very close to the Titanic Visitor Centre is the very last original White Star Line ship; the SS Nomadic, which is now open to the public (optional). Your Hop On Hop Off tour ticket will take you to Great Victoria Station for your train to Derry at 15.10 (3.10pm). Enjoy one of the great rail journeys of Ireland as your train passes along the spectacular North Atlantic Coastal route from Coleraine to Derry or as it is known "The Maiden City". On the banks of the River Foyle. On arrival in Derry at 17.25 (5.25pm) you will enjoy a private transfer across the border into Co. Donegal and on to beautiful Lough Eske and the wonderful five star standard hotel resort of Harvey's Point surrounded by the Hills of Donegal. Check in and enjoy a lovely dinner on your first night.

Day 2

After a full Irish breakfast, relax and enjoy the luxury of Harvey's Point. Perhaps enjoy a cookery demonstration, wine tasting (Tuesdays and Thursdays) or book a treatment. Lots of lovely walks in the beautiful surroundings of the Blue Stack Mountains. Enjoy dinner, (cabaret dinner on Wednesday nights).

Day 3

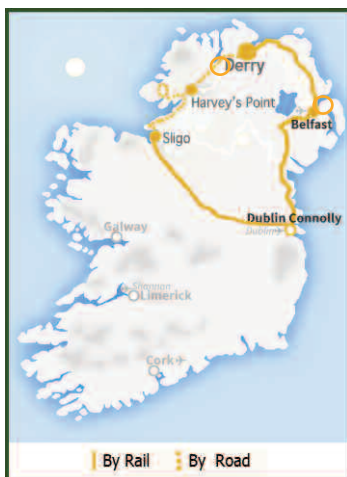
After breakfast and check out your transfer takes in Ireland's highest cliffs at Slieve League and a visit to Yeat's grave at Drumcliffe, and on to Sligo where we join our train for Dublin arriving in Connolly Station at 18.00 (6pm).

Departs Mon/Wed/Fri.

**PRICE: €799 pps Mon/Wed
€899 pps Friday**

Operates April to October.

Minimum booking 2 adults sharing.



Four-Day Tour: DH37

The Grand Atlantic

Day 1

Check in Dublin Heuston Station for 07.00hrs departure of InterCity train to Cork (breakfast/snack car available). Enjoy a visit to the world-renowned Blarney Castle & Gardens and the Queenstown Story at Cobh, the Titanic's last port of call and the rescue harbour for the Lusitania survivors in 1915. After a scenic train journey through the ancient Irish landscape dotted with castles, we transfer by coach to Blarney Castle and Village where we can kiss the famous Blarney Stone known as the "Stone of Eloquence". Enjoy shopping time and lunch (not included) at Blarney Woollen Mills and village before heading to our next destination, via coach. We visit Cobh – the embarkation point for generations of Irish emigrants to the new world, including passengers for the Titanic. Experience the "Queenstown Story". Enjoy a scenic rail journey from Cobh to Cork for transfer to Killarney. Overnight in Killarney four-star standard hotel.

Day 2

The world-renowned Ring of Kerry, with its overwhelming mountains and seascapes, is one of Ireland's most scenic delights. We travel by coach around the 100mile/179km long Ring of Kerry, where every bend reveals some of the most spectacular scenery in Ireland set between the mountains of Kerry, 'The Macgillycuddy's Reeks', and the Wild Atlantic coastline. Our day starts in Killarney as we then sweep along the north side of the Iveragh peninsula. Then it's onto the south side, through the villages of Waterville and Sneem, and into the pristine Killarney National Park. Enjoy views of The Skellig Islands where Star Wars "The Force Awakens" was recently filmed. Then we drop down alongside the Black Valley and Moll's Gap, stopping at Ladies View. Lunch stop at traditional Irish pub on this scenic journey (not included). We return to Killarney for your second overnight stay.

Day 3

07.00hrs transfer by road from Killarney to Limerick passing through the lovely village of Adare. In Limerick we have a short tour of the treaty city and setting for the movie "Angela's Ashes". We head north to Bunratty Castle and Folk Park. Our next stop is at a traditional Irish pub, O'Connor's of Doolin, with its reasonably priced seafood and pub grub - try the chowder (not included). It is a short drive from here to the majestic Cliffs of Moher; from here we enter the unique lunar landscape of the Burren rounding Black Head before heading along the shores of Galway bay (our route is regarded as one of Europe's top ten coastal drives). Overnight in Galway City three/four-star hotel.

Day 4

10.00hrs depart Galway for tour of Connemara, including Kylemore Abbey & Gardens after which we depart Galway by train to Dublin. Arriving at Dublin Heuston Station 21.45hrs (9.45pm).



Derryclare Lake - Connemara



THE ESSENTIALS

Departs :	Tuesday, Thursday and Saturday
Price:	Adult Low €719pps High €749 pps High Season: June to September
Check-in:	For 07.00am train to Cork (20 mins before departure)
Departure Point:	Information Desk – Heuston Station
Return:	21.45 (9.45pm)
Included:	<ul style="list-style-type: none">• Rail Travel - Dublin/Cork, Cork to Killarney, Galway to Dublin in reserved cars/seats• All Accommodation• Hosted tour throughout• Blarney Castle and Gardens• Cobh Heritage Centre• Ring of Kerry Tour• Bunratty Castle and Folk Park• Cliffs of Moher• Tour of Connemara• Kylemore Abbey and Gardens

One-Day Tour: DH01

Waterford Crystal, Kilkenny City, County Tipperary and the Suir Valley

ITINERARY

Check-in **Dublin Heuston** Station (Information Desk) for 07.25 (snacks available) departure of intercity train to **Kilkenny**. We arrive at 09.00 (9.00am) after a scenic rail journey and we take a guided tour of **Kilkenny City** known as "The Marble City". After the tour you will have plenty of time to explore and perhaps visit **Kilkenny Castle** overlooking the River Nore (admission not included) and the nearby **Kilkenny Design Centre**. We depart Kilkenny at 11.40 to



Waterford City. On arrival we transfer to Waterford Crystal and have time for lunch (not included) and shopping, followed by a tour of the Waterford Crystal Visitors Centre (included). The tour then departs **Waterford** by train at 16.25 arriving in **Dublin Heuston** at 20.00 (8.00p.m) (snacks available). Our return journey by train is via the scenic **Suir Valley** through the heart of **County Tipperary**. We change trains at Limerick Junction to join our express back to **Dublin**.

Departs Daily - Monday to Saturday

Overnight option (4* standard hotel) available in Waterford - please ask for details.

THE ESSENTIALS

Departs : Monday to Saturday

Price: Adult €119pps Student €99pps

Check-in: For 07.25am train to Waterford (20 mins before departure)

Departure Point: Information Desk – Heuston Station

Return: 20.00 (8.00pm)

Included:

- Rail Travel - Dublin to Kilkenny, Kilkenny to Waterford, Waterford to Dublin via Limerick Junction in reserved cars/seats
- Hosted tour throughout
- Guided tour of Kilkenny City, Waterford Crystal
- All transfers

Kilkenny Castle



CHECK-IN POINT DUBLIN RAIL STATION

Our Tour Hosts, in Bright Yellow jackets are always on hand to welcome you and to oversee the smooth running of all tour arrangements.





Six-Day Tour: DH371110

The All-Ireland Tour

Day 1

Check in Dublin Heuston Station for 07.00hrs departure of InterCity train to Cork (breakfast/snack car available). Enjoy a visit to the world renowned Blarney Castle & Gardens and the Queenstown Story at Cobh, the Titanic's last port of call and the rescue harbour for the Lusitania survivors in 1915. After a scenic train journey through the ancient Irish landscape dotted with castles, we transfer by coach to Blarney Castle and Village where we can kiss the famous Blarney Stone known as the "Stone of Eloquence". "Enjoy shopping time and lunch (not included) at Blarney Woollen Mills and village before heading to our next destination, via coach. We visit Cobh – the embarkation point for generations of Irish emigrants to the new world, including passengers for the Titanic." Experience the "Queenstown Story". Enjoy a scenic rail journey from Cobh to Cork for transfer to Killarney. Overnight in Killarney four star standard hotel.

Day 2

The world-renowned Ring of Kerry, with its overwhelming mountains and seascapes, is one of Ireland's most scenic delights. We travel by coach around the 100mile/179km long Ring of Kerry, where every bend reveals some of the most spectacular scenery in Ireland set between the mountains of Kerry, 'The Macgillycuddy's Reeks', and the Wild Atlantic coastline. Our day starts in Killarney as we then sweep along the north side of the Iveragh peninsula. Then it's onto the south side, through the villages of Waterville and Sneem, and into the pristine Killarney National Park. Enjoy views of The Skellig Islands where Star Wars "The Force Awakens" was recently filmed. Then we drop down alongside the Black Valley and Moll's Gap, stopping at Ladies View. Lunch stop at traditional Irish pub on this scenic journey (not included). We return to Killarney for your second overnight stay.

Day 3

07.30hrs transfer by road from Killarney to Limerick to visit Bunratty Castle, Cliffs of Moher, 2 overnights in Galway City in three-star standard hotel.

Day 4

10.00hrs depart Galway for tour of Connemara, including Kylemore Abbey & Gardens. Overnight in Galway City in three-star standard hotel.

Day 5

09.30 Transfer to Inis Mór, the largest of the Aran Islands, we enjoy a tour of the Island including a visit to the fortress of Dún Aengus. After return to Galway City for 19.20 hrs train to Dublin arriving 21.40. Transfer to Dublin City Centre Hotel.

Day 6

Check in Dublin Connolly Station for 07.35hrs departure of newly refurbished Enterprise express service to Belfast (breakfast/snack car available). The famous Causeway Coastal Route Drive, the Giants Causeway, Carrick-a-Rede Rope Bridge all in one day! We arrive in Belfast and then travel by coach north from Belfast along the famous Antrim Coast Road through Ballycastle en route to the Carrick-a-Rede Rope Bridge. Our lunch stop is usually in a traditional coastal pub in the area (not included). We continue along the Causeway Coast, one of the most magical drives in Europe, to the stunning Giant's Causeway. Spend some time climbing over the ancient stones and enjoying the myths and legends associated with this famous attraction. Next we enjoy a photo stop at the huge bastion of Dunluce Castle, then back to Belfast for a short tour before returning back to Dublin. Arriving at Dublin Connolly Station 22.15hrs (10.15pm) transfer to Dublin City Centre Hotel for overnight stay.

THE ESSENTIALS

Departs : Monday, Wednesday, Thursday and Sat

Price: **Adult Low €1239pps High €1299pps**
High Season: June to September

Check-in: For 07.00am train to Cork
(20 mins before departure)

Departure Point: Information Desk – Heuston Station

Return: 22.15 (10.15pm)

Included:

- Rail Travel - Dublin/Cork, Cobh / Killarney, Galway /Dublin, Dublin/Belfast in reserved cars/seats
- Hosted tour throughout
- All Accommodation
- Blarney Castle and Gardens
- Cobh Heritage Centre
- Ring of Kerry Tour
- Bunratty Castle and Folk Park
- Cliffs of Moher
- Flight to Inis Mór
- Tour of Connemara
- Kylemore Abbey and Gardens
- Giant's Causeway
- Carrig-a-rede rope bridge



Dun Aengus - Inis Mór



Shorter-Day Tour: DC08 - or Shore Excursion

The Wicklow Mountaineer **The Wicklow Mountains, East Coast, Avoca (Ballykissangel) and Glendalough**

A lovely fully guided tour into the **Wicklow Mountains** to visit Ireland's most famous village, **Avoca**, otherwise known as "**Ballykissangel**", situated in the beautiful **Vale of Avoca** and also the magnificent ancient monastic city of **Glendalough** (the valley of the two lakes).

Departs **Dublin Connolly Station** 09.40 by train, arrives **Arklow** at 11.10, then by road to **Avoca**: 11.30 – 12.45, **Glendalough**: 13.30-14.45, returns to **Dublin** by train at approx. 16.45.

ITINERARY

Check in **Dublin Connolly** station for 09.40 departure of train to **Arklow**. A fantastic tour during which you will enjoy a spectacular train journey south by **Killiney Bay**, around **Bray Head** and along the beautiful East Coast to **Wicklow** where we swing west into the Mountains. Visit the famous village of **Avoca (Ballykissangel)** in the hit TV series). See hand weaving at the Woollen Mills – great shopping & time for lunch – or maybe a pint at Fitzgeralds famous pub. Visit the ancient Monastic city of **Glendalough** (valley of the two lakes) all in beautiful mountain scenery! We return to **Dublin** by train arriving 16.45 (4.45pm) approx. **Ideal for cruise passengers - free transfers 0.9.00hrs from Cruise Terminal to Station.**

Scenic rail journey as seen on BBC TV Great Rail Journeys - with Michael Portillo.

THE ESSENTIALS

Departs : Monday-Friday & Sunday

Price: **Adult €69pps Student €59**

Check-in: Mon-Friday for 09.40am train to Rosslare Europort (20 mins before departure)
Sun for 10.25am

Departure Point: Dublin Connolly Station

Return: Mon-Fri -16.45 - Sun 17.15

Included:

- Rail Travel
- Hosted tour throughout
- Admission to Avoca Handweavers
- Admission to Glendalough
- All transfers



Four-Day Tour: LEO9

The London to Dublin Package

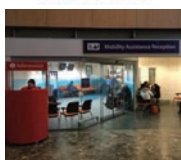
Visiting London? Why not add a short tour to The Emerald Isle the Eco-friendly way without having to fly or drive!

Travel to Ireland along the classic route by rail through the heart of England, along the lovely North Wales Coast and take a short sea trip on world's largest cruise ferry to Dublin City Centre – all in one day! We include three nights 4-star standard City Centre Hotel and a hop-on hop-off city tour so you can explore Dublin's fair city at your leisure.

PLEASE NOTE: Rail/Ship ticket back to London valid for ONE FULL MONTH from first use. Why not consider adding a Railtour from Dublin (one-day to nine-days tours) to complete your Ireland travel experience.

*First Class Upgrade from London available from €99 – enquire for details. This tour package is also available one way from London.

First
TRENITALIA



IRISH FERRIES



THE ESSENTIALS

Departs : 09.10 Monday to Friday,
Saturday at 08.50

Price: **Adult Low €629pps High €729 pps**
Student Low: €566pps High €656pps
High Season: June to September

Check-in: **Mobility Assistance Reception on main
concourse of London Euston Station
(30 mins before departure)**

Departure Point: London Euston Station

Included:

- All travel (rail and ship) London to Dublin return (First Class upgrade available)
- Transfers from/to Dublin Ferry Port
- Three nights 4 Star standard City Centre Hotel in Dublin - room only
- Hop-on Hop-off Dublin City tour (2 day ticket)
- All taxes and service charges



Photo courtesy of
Brian Solomon

**THE EMERALD ISLE EXPRESS – TOUR DCST2020
THE ORIGINAL FIVE STAR RAILCRUISE AND (CASTLE)
MANOR HOUSE TOUR
ONLY ONE DEPARTURE DATE: 20TH SEPTEMBER, 2020**

“Railtours Ireland First Class offers an exclusive rail cruise and manor house tour through Ireland on your own exclusive, private heritage train, delivering pullman style comfort.” Overnight in luxury five-star Irish manor houses, as well as city and country hotels. This all-inclusive tour is limited to 50 guests! We don’t sleep on the train – We sleep in Manor Houses, Country Estates and Luxury City Hotels!

Experience Dublin's Fair City before travelling by rail along the stunning East Coast to Waterford, Cork, C  bh and the Ring of Kerry.

Enjoy an Irish night in Killarney before continuing on through the savagely beautiful countryside of Connemara in Co. Galway.”

We do advise booking early so as to avoid disappointment. Remember only 50 seats available!
TOUR ITINERARY:

DAY 1: SUNDAY GATHERING DAY - DUBLIN

Gathering day in Dublin. Individual transfers from the airport to your hotel. Welcome reception, dinner and overnight stay in the five-star Merrion Hotel, in the heart of Dublin city.

DAY 2: MONDAY - DUBLIN TO WATERFORD

Champagne reception at Connolly station before boarding the Emerald Isle Express. Cruise by rail along Ireland’s scenic east coast through counties Wicklow and Wexford and on to Waterford city. Private visit to Waterford Crystal, dinner and overnight stay in the stunning five-star Mount Juliet Estate, dating back to the mid-1700s, set on 500 acres of parkland, meadow and forest. “Dine in The Lady Helen Michelin Star Restaurant in Mount Juliet”.

DAY 3: TUESDAY - WATERFORD TO CORK

Cruise by rail through the beautiful Suir Valley in county Tipperary while en route to Cork where we will enjoy a visit to Blarney Castle and Gardens. Dinner and overnight stay in the five-star Fota Island Resort, on Cork Harbour.

DAY 4: WEDNESDAY - CORK TO KERRY

We visit C  bh, the Titanic’s last port of call, and travel by rail to Killarney while enjoying lunch on the train. Delight in the spectacular beauty of the Ring of Kerry, a photographer’s paradise, before overnighting in the five-star Europe Hotel and Resort, with traditional evening entertainment after dinner in one of Killarney’s famous pubs.

DAY 5: THURSDAY - KILLARNEY TO LIMERICK

Once again, enjoy lunch on the train as you travel through the gentle Irish countryside, a landscape littered with ruined castles. Overnight stay in the fabulous Adare Manor, dating back to the 1720s. Adare Manor, recently announced as the 2026 Ryder Cup Host, is set on an estate of 840 acres of sweeping parklands, cultivated gardens and formal French gardens. Transfer by coach to the Medieval Bunratty Castle to sample the famous medieval banquet, and perhaps a pint afterwards in Durty Nelly’s!

DAY 6: FRIDAY - FREE DAY

Free day of leisure in Adare Manor with an optional tour to the Cliffs of Moher. Perhaps enjoy a round of golf, or some of the many activities available at this five-star resort, including falconry, whiskey tasting, clay pigeon shooting and horse riding, among others (<https://www.adaremanor.com/activities/>). Enjoy dinner and a second overnight stay in this stunning five-star luxury hotel.

DAY 7: SATURDAY – LIMERICK TO CLARE TO DUBLIN

From Limerick, we venture on to Galway aboard our Emerald Isle Express train with light lunch on board. Our trip today highlights the savage beauty of Connemara and will include the Quiet Man Bridge and afternoon tea in Ballinahinch Castle. Afterwards, we make our way back to Galway City centre. There, we board the Emerald Isle Express which will bring us back to Dublin. Entertainment and dinner on board. Overnight stay in the Merrion Hotel, Dublin.

DAY 8: SUNDAY – DEPARTURE DAY

Scattering Day. Individual transfers from your hotel to Dublin airport. We strongly advise, however, that for your own relaxation and comfort, you spend another night in Dublin to rest, after the week of touring, and enjoy some free time in Ireland’s bustling capital. We would be delighted to arrange these extra nights for you in our partner 4* or 5* partner hotels.



Price: €5,999 per person sharing
There is a Single Room Supplement of
€2,499 for solo travellers



Terms & Conditions

THE FOLLOWING STANDARD TERMS AND CONDITIONS APPLY TO ALL BOOKINGS

Railtours Ireland First Class (RTIFC) is dedicated to providing a professional and personalised service. It is our intention to operate all tours as advertised. However, due to operational reasons it may, on occasion, be necessary to alter certain itineraries. Railtours Ireland cannot be held liable in the event of an attraction being closed. Student discounts, special offers and other discounts can only be given if requested at time of booking. No discounts can be given retrospectively.

Railtours Ireland First Class cannot be held responsible for customers not having the correct visa documentation to enter Ireland or Northern Ireland.

Railtours Ireland First Class reserves the right to cancel tours if industrial or other action affects any of the components which make up our tour or if there is insufficient demand.

For any tours that include a trip to the Aran Islands the following condition applies: Should weather conditions be such as to curtail flights you will be taken on an alternative tour to Connemara and refunded the difference. No further refund available should you decide not to go to Connemara for any reason.

Railtours Ireland First Class cannot be held responsible for any damage, loss (including loss of tickets), accident, delay, irregularity, injury to person or property whatsoever or howsoever caused arising out of or in connection with excursion, tour or transfer. Passengers travel at their own risk and our liability for any claim whatsoever is limited only to the price of the tour.

CANCELLATION POLICY - *"If you miss the train, you miss the tour"*

DAY TOURS: 24 hours' notice prior to the departure time must be given in order to get a refund on any day tour.

EXTENDED TOURS: 48 hours' notice prior to the departure time if the tour includes accommodation (Except for The Emerald Isle Express tour where 60 days' notice is required).

ALTERATIONS: Once reservations are confirmed by RTIFC and after a grace period of 72 Hours (3 days) any alterations to the reservation of extended tours (any tours with accommodation) including but not limited to, change of date, tour change, will be subject to a fee of EURO 49.00 per booking.

"If you miss the train, you miss the tour"

All refunds are subject to a 10% administration charge. We reserve the right to refuse admission to any tour and to terminate a tour if circumstances demand.

UNUSED TOUR ARRANGEMENTS: RTIFC cannot make refunds or exchanges for unused accommodation, services or features of any tour unless agreed to prior to departure.

CLAIMS OR DISPUTES: RTIFC take complaints very seriously and we ask if you are not satisfied with any aspect of our service that you submit your complaint in writing no later than 28 days after the end of your tour. Involving social media before contacting RTIFC will automatically void any further responsibility on behalf of the company.

HOTELS: All hotels are subject to availability at time of booking. Please note that due to a critical hotel shortage in Ireland we may on occasion use hotels just outside the city or town centre. This can be the difference between confirming or rejecting your booking, however we will always let you know prior to final confirmation.

LUGGAGE ALLOWANCE: There is no limit to the amount of luggage and there are luggage facilities on board trains & coaches and we try to keep luggage transfers between trains and coaches to a minimum. However, it is strongly recommended that large excess amounts of luggage be stored, perhaps, at your Dublin hotel for the duration of your railtour.

ACCESSABILITY: As long as the individual has some mobility then our tours would be suitable. The trains are wheelchair friendly in Ireland however the buses/coaches are not. The guest would have to be able to climb the steps on to the bus. It is with regret that we cannot accommodate Mobility Scooters on our tours.

CURRENCY: "All US\$, CAD\$, AUD\$ and GBP£ prices displayed on our website are approximate and subject to fluctuations in exchange rates."

PLEASE NOTE

Online Tour Operators / Tour / Inward Operators guests receive the following in relation to overnight tours:

Belfast Hotel 4* Standard with Breakfast

Galway 3* Boutique and 4* Standard Hotel with Breakfast

"Killarney - B+B accommodation with Breakfast (4* hotel upgrade available at €99 per person sharing per night".

Dublin - 4* Standard accommodation with no Breakfast / no Breakfast on train included

(Accommodations are booked on a per person sharing option and single supplements are charged by accommodation providers which in turn will be applied to bookings)

Iarnród Éireann/CIE shall in no way be responsible for the activities, acts or defaults of Railtours Ireland and cannot be held responsible or liable for any damage (whether direct, indirect, incidental, consequential), loss, accident, delay, irregularity, death, injury to person or property howsoever or whatsoever caused arising out of or in connection with the provision of the services offered by Railtours Ireland or in any manner whatsoever save to the extent of any liability incurred by Iarnród Éireann/CIE pursuant to the provision by it of rail services subject to the terms and conditions of the CIE Bye-laws and the Iarnród Éireann Conditions of Carriage of Passengers and their Luggage.

Iarnród Éireann/CIE is not responsible or liable for the accuracy of any information, data or opinion or statements made on this promotional material/website. Iarnród Éireann/CIE disclaims all liability which might arise out of, or in connection with the use or reliance on the content or performance of, or information on or services provided on or through this promotional material/ website.

WHY CHOOSE RAILTOURS IRELAND *First Class!*

- ✓ Car Free - Care Free
- ✓ First Class service all the way
- ✓ Reserved cars / seats on the train
- ✓ Railtours Ireland Host throughout
- ✓ Visitor attraction entry tickets included
- ✓ Three/four/five star standard hotels
- ✓ Open return rail tickets valid for 1 month
(Stay on after your tour finishes in Killarney, Galway or Belfast)
- ✓ All taxes and service charges included
- ✓ All extended tours from Heuston Station
include Free Hop On Hop Off Dublin bus tour
tickets and free breakfast on the train Day 1*

BOOK TODAY & TRAVEL TOMORROW

Hotel: Your concierge /
reception will make
your booking

Online: railtoursireland.com

Phone: +353 1 856 0045

Toll Free:(USA &
Canada)

1877 451 4783

Freephone:(UK):
0800 328 2899



Check In point
Heuston Station

Visit Us: Railtours Ireland

First Class Welcome Centre

16 Amiens Street, Dublin D01XD21 Ireland.
(directly opposite Connolly Station)

Email: info@railtoursireland.com

The Emerald Isle Express in
Co. Galway



Photo courtesy of Fred Dean



Hosted Railtours for
the Independent Traveller
RAILTOURSIRELAND.COM

And in association with



Iarnród Éireann
Irish Rail



Valid from Jan 2019