

RAILTOURS IRELAND

First Class!

GREAT ONE DAY TOURS TO NINE DAY TOURS



Hosted Railtours for
the Independent Traveller
RAILTOURSIRELAND.COM

**BOOK
TODAY
TRAVEL
TOMORROW**

Must see attractions

- "Star Wars" Skellig Islands
- Cliffs of Moher + Bunratty Castle
- Blarney Castle + Cobh
- Ring of Kerry
- Giant's Causeway
- Game of Thrones
- Waterford + Kilkenny
- Aran Islands



View of The Skellig Islands from our Ring of Kerry Tour
Recent location for "Star Wars"

NEW FOR 2016

**Explore The Wild Atlantic Way
in comfort and style with
railtoursireland.com**



In association with



**Iarnród Éireann
Irish Rail**



IRELAND'S ANCIENT EAST™
Discover through Rail



WILD ATLANTIC WAY
SEAN AN ATLANTACH FÁS



Incredible Value Dublin Apartment!

As part of Railtours Ireland First Class's aim to expand our Dublin accommodation options we are delighted to offer a selection of luxury fully equipped self-catering apartments.

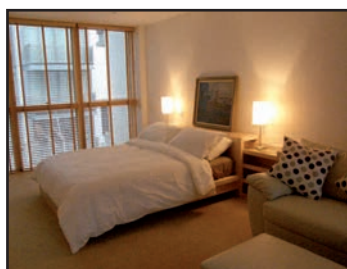
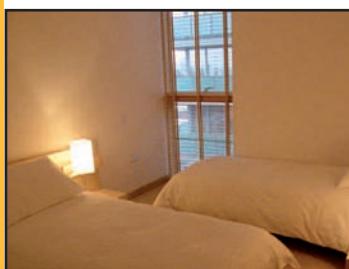
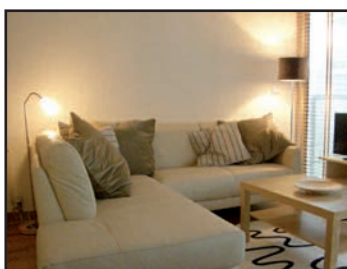
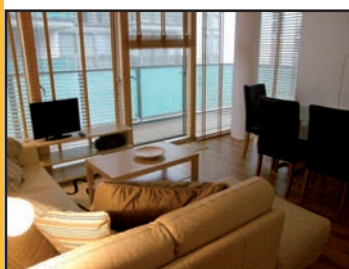
This is our "Spencer Dock" apartment situated in Dublin's exciting new Docklands Quarter

Situated next to Dublin's new National Convention Centre, and located right beside the new 'Luas' tramlink stop at Spencer Dock - the apartments are close to the City Centre and Connolly Train Station.

The Apartment is on the second floor and has two balconies.

There is an elevator and a Concierge.

Our apartment is only available in conjunction with a Railtour booking.



THE ESSENTIALS

- ✓ €199 per night
- ✓ Sleeps 6 (Sofa bed available)
- ✓ City centre location
- ✓ Located on LUAS stop
- ✓ Fully equipped throughout
- ✓ 3 Bedrooms, 3 Bathrooms
- ✓ All linens and towels included
- ✓ Free Wi-Fi
- ✓ Non Smoking apartment



One Day Tour DH06

Limerick, The Cliffs of Moher, Bunratty Castle, The Burren & Galway Bay

Check in Dublin Heuston Station for 07.00hrs departure of InterCity train to Limerick. (breakfast/snack car available). This day tour will take you to the most popular visitor attraction outside of Dublin – the Cliffs of Moher, on the Wild Atlantic Way. Sit back and relax as your train glides through the heart of Ireland, an ancient landscape littered with castles. We join our coach at Limerick which sits on the mighty river Shannon and visit Bunratty Castle & Folk Park Village en-route to our lunch stop, Gus O'Connor's famous seafood pub in Doolin (not included). Then, the spectacular Cliffs of Moher, some of the highest sea cliffs in Europe. Enjoy a short hike along the cliff path rising 215 metres above the pounding Atlantic Ocean. We continue along the Wild Atlantic Way through the lunar landscape of the Burren region, a UNESCO Geo-Park famous for its fauna and flora. We then head along the shores of Galway Bay for a flavour of Galway City traffic permitting. We join your InterCity train at Galway Ceánnt Station, for our train to Dublin at 19.20hrs departure. Arriving at Dublin Heuston Station 21.45hrs (9.45pm).

THE ESSENTIALS

Departs:	Daily - Monday to Saturday year round
Price:	Adult €109 Student €98
Check In:	For 07.00hrs train to Limerick
Departure Point:	Information Desk – Heuston Station
Return:	21.45hrs (9.45pm)
Included:	<ul style="list-style-type: none"> • Rail Travel - Dublin to Limerick • Galway to Dublin in reserved cars • Hosted tour throughout • Bunratty Castle & Folk Park • Cliffs of Moher





One Day Tour DH02

Cork, Blarney Castle, Cobh & the Titanic Story

Check in Dublin Heuston Station for 07.00hrs departure of InterCity train to Cork (breakfast/snack car available). Kiss the Blarney Stone! Travel south from Dublin to Cork, Ireland's southern capital. Enjoy a visit to the world renowned Blarney Castle & Gardens and the Queenstown Story at Cobh, the Titanic's last port of call and the rescue harbour for the Lusitania survivors in 1915. After a scenic train journey through the ancient Irish landscape dotted with castles, we transfer by coach to Blarney Castle where we can kiss the famous Blarney Stone known as the "Stone of Eloquence". Enjoy shopping time and lunch (not included) at Blarney Woollen Mills and village before returning to Cork for a short city tour and a visit to the famous English Market. We then visit Cobh – the embarkation point for generations of Irish emigrants to the new world including passengers for the Titanic. Experience the "Queenstown Story". Enjoy a scenic rail journey from Cobh to Cork Kent Station to connect with your InterCity train travelling back to Dublin. Arriving at Dublin Heuston Station at 20.00hrs (8.00pm).

THE ESSENTIALS

Departs:	Daily - Monday to Saturday year round
Price:	Adult €109 Student €98
Check-in :	For 07.00hrs train to Cork
Departure Point:	Information Desk – Heuston Station
Return:	20.00hrs (8.00pm)
Included:	<ul style="list-style-type: none"> • Rail Travel - Dublin to Cork Cobh to Cork, Cork to Dublin in reserved cars • Hosted tour throughout • Blarney Castle and Gardens • English Market Cork City • Cobh Heritage Centre



**NEW
FOR
2016**



One Day Tour DH05GD

The Gap of Dunloe - Killarney's Lakes, Islands and Mountain Passes

Check in Dublin Heuston Station for 07.00hrs depart of InterCity train to Killarney. On arrival in Killarney at 10.15hrs, transfer from Killarney to Ross Castle. From here the tour begins by traditional open boat on Lough Leane. Passing Innisfallen, Ross Island and under the Bricin Bridge towards the Meeting of the Waters at the old Weir Bridge. The tour continues along the Long Range towards Eagles Nest Mountain and onto the Upper Lake. A stop over here for a light snack and refreshments at Lord Brandans cottage (not included). Then travel by pony and trap through the Black Valley and Gap of Dunloe finishing up at Kate Kearneys cottage. At "Kate's" Traditional Irish Pub you will enjoy the tradition of hospitality and is the perfect finish to a day of memorable sight seeing. Transfer from here at 16.15hrs (4.15pm) to Killarney Railway Station, arrival at 16.35hrs. Dublin train departs at 17.37 hrs (5.37pm) so there is normally time for a quick flavour of Killarney town centre which is close to the station. Arriving at Dublin Heuston Station 21.00hrs (9.00pm).

Please note: Guests need to be prepared for varying weather conditions and rain gear is essential to enjoy this tour. Regretfully this tour is not suitable for guests with physical disabilities.

THE ESSENTIALS

- Departs:** Daily Monday to Saturday year round
- Price:** Adult €159 Student €143
- Check-in:** For 07.00hrs train to Killarney
- Departure Point:** Information Desk – Heuston Station
- Return:** 21.00hrs (9.00pm)
- Included:**
 - Rail travel - Dublin to Killarney in reserved cars/seats
 - Hosted tour throughout
 - Gap of Dunloe tour including 14 mile voyage across all three lakes of Killarney
 - Seven mile pony and trap trek
 - All transfers



One Day Tour DC10

The Giant's Causeway, Glens of Antrim & Wild Atlantic Coast

Check in Dublin Connolly Station for 07.35hrs departure of newly refurbished Enterprise Express service to Belfast (breakfast/snack car available). The famous Causeway Coastal Route Drive, the Giants Causeway, Carrick-a-Rede Rope Bridge all in one day! We arrive in Belfast and then travel by coach north from Belfast along the famous Antrim Coast Road through Ballycastle en-route to the Carrick-a-Rede Rope Bridge. The famous Bushmills Visitor Centre is our lunch stop (not included). We continue along the Causeway Coast, one of the most magical drives in Europe, to the stunning Giant's Causeway. Spend some time climbing over the ancient stones and enjoying the myths and legends associated with this famous attraction. Next we enjoy a photo stop at the huge bastion of Dunluce Castle, then back to Belfast for a short tour before returning back to Dublin. Arriving at Dublin Connolly Station 22.15hrs (10.15pm).



THE ESSENTIALS

Departs:	Daily - Monday to Saturday year round
Price:	Adult €109 Student €98
Check-in :	For 07.35hrs Enterprise Express to Belfast
Departure Point:	Information Desk – Connolly Station
Return:	22.15hrs (10.15pm) - Nov/Dec 8.15pm
Included:	<ul style="list-style-type: none"> • Rail Travel - Dublin to Belfast return in reserved cars • Hosted tour throughout • Carrick-A-Rede Rope Bridge Crossing • Dunluce Castle photostop • Giant's Causeway

One Day Tour DH05

The Ring of Kerry

Check in Dublin Heuston Station for 07.00hrs for your Intercity train to Killarney (breakfast/snack car available). Enjoy the train ride through the heart of Ireland to Killarney; the gateway to The Ring of Kerry. We continue by coach around the 100mile/179km long Ring of Kerry where every bend reveals some of the most spectacular scenery in Ireland set between the mountains of Kerry 'The Macgillycuddy's Reeks' and the Wild Atlantic coastline. Our day starts in Killarney as we then sweep along the north side of the Iveragh peninsula. Then it's onto the south side, through the villages of Waterville and Sneem, and into the pristine Killarney National Park. Enjoy the views of The Skellig Islands, where Star Wars "The Force Awakens" was recently filmed. Then we drop down alongside the Black Valley and Moll's Gap, stopping at Ladies View. Lunch stop will be at a traditional Irish Pub (not included) on this scenic journey. We return to Killarney for our train back to Dublin. Arriving at Dublin Heuston Station 21.00hrs (9.00pm).



THE ESSENTIALS

Departs:	Daily - Monday to Saturday year round
Price:	Adult €109 Student €98
Check-in:	For 07.00hrs train to Killarney
Departure Point:	Information Desk – Heuston Station
Return:	21.00hrs (9.00pm)
Included:	<ul style="list-style-type: none"> • Rail Travel - Dublin to Killarney return in reserved cars/seats • Hosted tour throughout • Ring of Kerry scenic tour

One Day Tour DC10T

Titanic Belfast and Belfast City

Check in Dublin Connolly Station for 07.35hrs departure of newly refurbished Enterprise Express service to Belfast (breakfast/snack car available). On arrival in Belfast your tour host provides you with tickets for the Hop-on-Hop-off City Tour. You are then free to explore this fascinating city at your leisure. See close up the world famous political murals depicting "The Troubles" or visit Crumlin Road Gaol and see the condemned cell. Write your thoughts on the Peace Wall alongside those of Bill Clinton and the Dalai Lama. Visit Titanic Belfast, a monument to Belfast's maritime heritage on the site of the former Harland & Wolff shipyard in the city's Titanic Quarter where the RMS Titanic was built. Moored very close to the Titanic Visitor Centre is the very last original White Star Line ship; the SS Nomadic now open to the public (admission not included). Arriving at Dublin Connolly Station 22.15hrs (10.15pm).



THE ESSENTIALS

Departs:	Daily - Monday to Saturday year round
Price:	Adult €109 Student €98
Check-in :	For 07.35hrs Enterprise Express to Belfast
Departure Point:	Information Desk – Connolly Station
Return:	22.15hrs (10.15pm)
Included:	<ul style="list-style-type: none"> • Rail Travel - Dublin to Belfast return in reserved cars • Hosted tour throughout • Hop On - Hop Off City Tour • Titanic Belfast admission

One Day Tour DH11

Aran Islands & Scenic Flight over Galway Bay

Check in Dublin Heuston Station for 07.35hrs departure of InterCity train to Galway Ceánnt Station. This tour offers a unique opportunity to visit Inis Mór, the largest of the three Aran Islands. Set on the west coast of Ireland in the mouth of Galway Bay, Inis Mór is a bastion of traditional Irish language, culture and music, unique in its geology, archaeology and history. Upon arriving into Galway we take a short transfer to Connemara Airport for short return flight to Inis Mór (meaning big island). We enjoy a tour of the island including a visit to the fortress of Dún Aengus, the most magnificently and dramatically situated Celtic Stone fort in Western Europe standing precariously on the edge of a 100 meter high cliff overlooking the Atlantic Ocean. We arrive back at the village of Kilronan with time for lunch (not included) or visit the Aran Sweater Market. We return to Galway with some time to explore the city centre. Arriving at Dublin Heuston Station 21.45hrs (9.45pm).



* should weather conditions be such as to curtail flights you will be taken on an alternative tour to Connemara and refunded the difference. No further refund available should you decide not to go to Connemara for any reason, this is a condition of booking.

THE ESSENTIALS

Departs:	Daily - Monday to Saturday year round
Price:	Adult €139 Student €125
Check-in:	For 07.35hrs train to Galway
Departure Point:	Information Desk – Heuston Station
Return:	21.45hrs (9.45pm)
Included:	<ul style="list-style-type: none"> • Rail Travel - Dublin to Galway return in reserved cars/seats • Hosted tour throughout • Aer Arann Flight / Tour of Inis Mór



DAY TOUR PLUS OPTIONS

have a sleep in and get a later train!

Not a morning person?

Try our day tour plus tours. Take an afternoon train, and then overnight in one of our great Irish cities or towns and join our day tour the following day.

DH02AN Day Tour Plus - Cork City & Blarney & Cobh

Depart Dublin at 14:00hrs and travel to Cork City – Cork City is the original foodie capital of Ireland has excellent restaurants, bars and nightlife to discover. Overnight in a city centre 4* hotel and join the Blarney Castle, Cobh & the Titanic Story Day Tour the following day.

DH05AN Day Tour Plus - Killarney & The Ring Of Kerry

Depart Dublin at 15:00hrs and travel to Killarney, the gateway to the 'Kingdom'. Killarney is a buzzing town with lots of traditional music outpouring from the pubs and restaurants. Overnight in a city centre 4* hotel and join the Ring of Kerry Day Tour the following day.

DH04AN Day Tour Plus - Connemara & Galway Bay

Depart Dublin at 13:25hrs and travel to Galway, the gateway to the West of Ireland. Enjoy some local seafood in one of the many restaurants in Galway. Overnight in a city centre 4* hotel and join the Connemara Day Tour the following day.

DH06AN Day Tour Plus - Limerick City & the Cliffs of Moher

Depart Dublin at 15:25hrs and travel to Limerick, a lady of a city, with a lively mix of sport, culture and great pubs thrown in for good measure. Overnight in a city centre 4* hotel and join the Cliffs of Moher Day Tour the following day.

DC10AN Day Tour Plus - Belfast City & Giants Causeway

Depart Dublin at 13:20hrs and travel to Belfast, the capital city of Northern Ireland. Small but with a big heart, super-cool Belfast is one of Europe's true renaissance cities. Overnight in a city centre 4* hotel and join our Giants Causeway Tour the following day.

Please visit www.railtoursireland.com for further details on our Day Tour Plus Options

THE ESSENTIALS

- ✓ **Afternoon departures**
- ✓ **All tours are ADULT €199pps**
except DC10AN is ADULT €209pps
- ✓ **All round trip train tickets**
- ✓ **Reserved seats on the train**
- ✓ **Overnight accommodation**



Two Day Tour DC10G

Belfast & Game of Thrones & Giants Causeway

Day 1

Check in Dublin Connolly Station for 07.35hrs departure of newly refurbished Enterprise Express service to Belfast (breakfast available). On arrival in Belfast your tour host provides you with tickets for the Hop-on-Hop-off City Tour. You are then free to explore this fascinating city at your leisure. See close up the world famous political murals depicting "The Troubles" or visit Crumlin Road Gaol. Write your thoughts on the Peace Wall alongside those of Bill Clinton and the Dalai Lama. Visit Titanic Belfast, a monument to Belfast's maritime heritage on the site of the former Harland & Wolff shipyard in the city's Titanic Quarter where the RMS Titanic was built. Moored very close to the Titanic Visitor Centre is the very last original White Star Line ship; the SS Nomadic now open to the public (admission not included). Overnight: 4* Hotel in downtown Belfast including full Irish breakfast.

Day 2

At 09.00hrs we depart Belfast and travel north along the scenic Causeway Route on our Game of Thrones tour where we visit seven iconic sites from Series 1 to 4. We visit the Caves where Melisandre of Asshai gave birth to her "shadow baby" and Ballycastle the native home of Lady Catelyn Stark and Varys. A real wow is The Kings Road locally known as The Dark Hedges, where Arya Stark escaped from Kings Landing dressed as a boy. We break for Lunch (not included) at the cosy Fullerton Arms in Ballintoy/Pyke Harbour where several major scenes were filmed. The last stop is at the renowned Giant's Causeway a UNESCO World Heritage Site and then back to Belfast for a short tour before returning to Dublin. Arriving at Dublin Connolly Station 22.15hrs (10.15pm).

THE ESSENTIALS

Departs Dublin: Every Tuesday, Friday & Saturday all year

Price: Adult €279pps Student €251pps

Check-in: For 07.35hrs Enterprise Express to Belfast

Departure Point: Information Desk – Connolly Station

Return: 22.15 (10.15pm)

Included:

- Rail Travel - Dublin to Belfast return in reserved cars/seats
- Hosted tour throughout
- Hop On - Hop Off City Tour
- Titanic Belfast admission
- Game of Thrones tour





Two Day Tour DH03

Blarney Castle, Cobh, Killarney & Ring of Kerry

Day 1

Check in Dublin Heuston Station for 07.00hrs departure of InterCity train to Cork (breakfast/snack car available). Enjoy a visit to the world renowned Blarney Castle & Gardens and the Queenstown Story at Cobh, the Titanic's last port of call and the rescue harbour for the Lusitania survivors in 1915. After a scenic train journey through the ancient Irish landscape dotted with castles, we transfer by coach to Blarney Castle where we can kiss the famous Blarney Stone known as the "Stone of Eloquence". Enjoy shopping time and lunch (not included) at Blarney Woollen Mills and Village before returning to Cork for a short City Tour and a visit to the famous English Market. We then visit Cobh – the embarkation point for generations of Irish emigrants to the new world including passengers for the Titanic. Experience the "Queenstown Story". Enjoy a scenic rail journey from Cobh to Cork for transfer to Killarney. Overnight in Killarney four star standard hotel.

Day 2

Experience the world renowned Ring of Kerry with its overwhelming mountains and seascapes is one of Ireland's most scenic delights. We travel by coach around the 100mile/179km long Ring of Kerry where every bend reveals some of the most spectacular scenery in Ireland set between the mountains of Kerry 'The Macgillycuddy's Reeks' and the Wild Atlantic coastline. Our day starts in Killarney as we then sweep along the north side of the Iveragh peninsula. Then it's onto the south side, through the villages of Waterville and Sneem, and into the pristine Killarney National Park. Then we drop down alongside the Black Valley and Moll's Gap, stopping at Ladies View. We return to Killarney to connect with the train back to Dublin. Arriving at Dublin Heuston Station 21.00hrs (9.00pm).

THE ESSENTIALS

Departs: Daily Monday to Saturday year round

Price: Adult €269pps Student €242pps

Check-in: For 07.00 hrs train to Cork

Departure Point: Information Desk – Heuston Station

Return: 21.00 (9.00pm)

Included:

- Rail Travel - Dublin to Cork ,
Cork to Mallow, Mallow to Killarney,
Killarney to Dublin in reserved cars/seats
- Hosted tour throughout
- Blarney Castle and Gardens
- Cobh Heritage Centre
- Ring of Kerry Tour



Three Day Tour DH36

Cork, Blarney Castle, Ring of Kerry, Cliffs of Moher

Day 1

Check in Dublin Heuston Station for 07.00hrs departure of InterCity train to Cork (breakfast/snack car available). Enjoy a visit to the world renowned Blarney Castle & Gardens and the Queenstown Story at Cobh, the Titanic's last port of call and the rescue harbour for the Lusitania survivors in 1915. After a scenic train journey through the ancient Irish landscape dotted with castles, we transfer by coach to Blarney Castle where we can kiss the famous Blarney Stone known as the "Stone of Eloquence". Enjoy shopping time and lunch (not included) at Blarney Woollen Mills and Village before returning to Cork for a short City Tour and a visit to the famous English Market. We then visit Cobh – the embarkation point for generations of Irish emigrants to the new world including passengers for the Titanic. Experience the "Queenstown Story". Enjoy a scenic rail journey from Cobh to Cork for transfer to Killarney. Overnight in Killarney at a four star standard hotel.

Day 2

Experience the world renowned Ring of Kerry with its overwhelming mountains and seascapes is one of Ireland's most scenic delights. We travel by coach around the 100mile/179km long Ring of Kerry where every bend reveals some of the most spectacular scenery in Ireland set between the mountains of Kerry 'The Macgillycuddy's Reeks' and the Wild Atlantic coastline. Our day starts in Killarney as we then sweep along the north side of the Iveragh peninsula. Then it's onto the south side, through the villages of Waterville and Sneem, and into the pristine Killarney National Park. Enjoy views of The Skellig Islands where Star Wars "The Force Awakens" was recently filmed. Then we drop down alongside the Black Valley and Moll's Gap, stopping at Ladies View. Lunch stop at traditional Irish pub on this scenic journey (not included). We return to Killarney for your second overnight stay.

Day 3

07.30hrs transfer by road from Killarney to Limerick passing through the lovely village of Adare. In Limerick we have a short tour of the treaty city and setting for the movie "Angela's Ashes". We head north to Bunratty Castle and Folk Park. Our next stop is at a traditional Irish pub, O'Connor's of Doolin, with its reasonable priced seafood and pub grub - try the chowder (not included). It is a short drive from here to the majestic Cliffs of Moher; from here we enter the unique lunar landscape of the Burren rounding Black Head before heading along the shores of Galway Bay (our route is regarded as one of Europe's top ten coastal drives). Guests have a short time in Galway city traffic permitting before returning by train to Dublin. Arriving at Dublin Heuston Station 21.45hrs (9.45pm).

THE ESSENTIALS

Departs : Monday to Thursday and Saturday

Price: Adult €479pps Student €431pps

Check-in: For 07.00am train to Cork

Departure Point: Information Desk – Heuston Station

Return: 21.45 (9.45pm)

Included:

- Rail Travel - Dublin to Cork, Cobh - Cork
Cork to Killarney, Galway to Dublin
in reserved cars/seats
- Hosted tour throughout
- Blarney Castle and Gardens
- Cobh Heritage Centre
- Ring of Kerry Tour
- Bunratty Castle and Folk Park
- Cliffs of Moher





Three Day Tour DH05STW

"Star Wars" - The Skellig Islands, Ring of Kerry and Wild Atlantic Experience

Day 1

Check in Dublin Heuston Station for 07:00hrs departure of your Intercity train from Dublin to Killarney. On arrival in Killarney we join our luxury coach for the first part of our Ring Of Kerry scenic tour. Lunchtime (circa 13:00hrs/1.00pm) sees us arrive at the small market town of Cahersiveen at the entrance of Kells Bay on the Wild Atlantic Way. Check in to 5* rated QC Boutique Townhouse on the main street of Cahersiveen. Afternoon free. Dinner at QC's award winning restaurant is included on evening one. Overnight in QC Boutique Townhouse, winner of the Trip Advisor Travellers Choice Awards 2016.

Day 2

Start the day with QC's substantial continental breakfast in your room. 09:00hrs transfer to Portmagee / Skellig Experience and jetty for 45 minute and 7 miles boat trip to Skellig Michael, a UNESCO World Heritage Site and recent movie location for Star Wars – The Force Awakens. This starkly beautiful rock / island was the extremely isolated home early Irish Christian monks in the early 6th Century and is traversed by a stone staircase that clings precariously to the rock. The monastery is made up of six dry stone beehive huts and two boat shaped Oratory's. Nowadays the only inhabitants are the myriad species of wild seabirds. We have around three hours to explore this extraordinarily beautiful location - enjoy your packed lunch. Arrival back to Portmagee mid-afternoon and transfer to QC Boutique Townhouse for the evening in which you are free to discover the many local pubs of Cahersiveen some of which have traditional Irish music. Your hosts in QC's will be happy to advise you on evening dining options and entertainment.

Day 3

Start the day with QC's substantial continental breakfast in your room. Your morning is free and your hosts will advise you on local walks and other activities. 13:00hrs/1.00pm pick up for remainder of Ring of Kerry tour including lunch stop (not included) shortly after. After completing the Ring of Kerry tour you will arrive back to Killarney in time for your return train to Dublin. Arriving at Dublin Heuston Station 21:00hrs (9.00pm). Overnight options in Killarney are available. Your return train ticket is valid for one month.



QC Boutique Townhouse, Bar & Seafood Restaurant, Cahersiveen, Co. Kerry



***Extremely important information about this tour* Special Conditions**

On Day 2 the boat journey to the Skellig Islands is weather dependent and can only be confirmed as possible on that morning. In the event of adverse weather conditions and depending on local sea conditions there will be two alternative options offered.

Firstly if it's unsafe to put to sea at all we will provide an in depth local tour including the Skellig Visitor Experience Centre and the Skellig Ring Atlantic drive. There will be a refund of €30.00 per person in this event.

Secondly it may be safe to put to sea but unsafe to land on Skellig Michael, in this case the boat will tour around both islands, allowing close up views of the birds and sealife including seals, puffins and nesting birds. There will be no refund in this case.

- **It is important to note that these are booking conditions and by reserving this tour you agree to this.**
- **This is a very special tour and is not for the faint hearted. A degree of personal fitness and mobility is required. Regrettably we cannot accommodate wheelchairs etc.**
- **There are NO facilities whatsoever including bathrooms on Skellig Michael.**

THE ESSENTIALS

Departs: Daily Monday to Saturday mid May-Sept

Price: Adult €599 minimum booking 2 people sharing

Check-in: For 07.00am train to Killarney

Departure Point: Information Desk – Heuston Station

Return: 21.00 (9.00pm)

Included:

- **Hosted Rail travel Dublin to Killarney Killarney to Dublin in reserved cars/seats**
- **Ring of Kerry tour**
- **2 nights QC's Boutique Townhouse B & B**
- **One dinner, one packed lunch**
- **All transfers, local tours and boat trips* (see special conditions above)**



Four Day Tour DH37

The Grand Atlantic

Check in Dublin Heuston Station for 07.00hrs departure of InterCity train to Cork (breakfast/snack car available). Enjoy a visit to the world renowned Blarney Castle & Gardens and the Queenstown Story at Cobh, the Titanic's last port of call and the rescue harbour for the Lusitania survivors in 1915. After a scenic train journey through the ancient Irish landscape dotted with castles, we transfer by coach to Blarney Castle and Village where we can kiss the famous Blarney Stone known as the "Stone of Eloquence". Enjoy shopping time and lunch (not included) at Blarney Woollen Mills before returning to Cork for a short City Tour and a visit to the famous English Market. We then visit Cobh – the embarkation point for generations of Irish emigrants to the new world including passengers for the Titanic. Experience the "Queenstown Story". Enjoy a scenic rail journey from Cobh to Cork for transfer to Killarney. Overnight in Killarney four star standard hotel.

Day 2

Experience the world renowned Ring of Kerry with its overwhelming mountains and seascapes is one of Ireland's most scenic delights. We travel by coach around the 100mile/179km long Ring of Kerry where every bend reveals some of the most spectacular scenery in Ireland set between the mountains of Kerry 'The Macgillicuddy's Reeks' and the Wild Atlantic coastline. Our day starts in Killarney as we then sweep along the north side of the Iveragh peninsula. Then it's onto the south side, through the villages of Waterville and Sneem, and into the pristine Killarney National Park. Enjoy views of The Skellig Islands where Star Wars "The Force Awakens" was recently filmed. Then we drop down alongside the Black Valley and Moll's Gap, stopping at Ladies View. Lunch stop at traditional Irish pub on this scenic journey (not included). We return to Killarney for your second overnight stay.

Day 3

07.30hrs transfer by road from Killarney to Limerick passing through the lovely village of Adare. In Limerick we have a short tour of the treaty city and setting for the movie "Angela's Ashes". We head north to Bunratty Castle and Folk Park. Our next stop is at a traditional Irish pub, O'Connor's of Doolin, with its reasonable priced seafood and pub grub - try the chowder (not included). It is a short drive from here to the majestic Cliffs of Moher; from here we enter the unique lunar landscape of the Burren rounding Black Head before heading along the shores of Galway bay (our route is regarded as one of Europe's top ten coastal drives). Guests have a short time in Galway city traffic permitting before returning by train to Dublin.

Day 4

10.00hrs depart Galway for tour of Connemara, including Kylemore Abbey & Gardens after which we depart Galway by train to Dublin. Arriving at Dublin Heuston Station 21.45hrs (9.45pm).



THE ESSENTIALS

Departs :	Monday to Thursday and Saturday
Price:	Adult €599pps Student €539pps
Check-in:	For 07.00am train to Cork
Departure Point:	Information Desk – Heuston Station
Return:	21.45 (9.45pm)
Included:	<ul style="list-style-type: none"> • Rail Travel - Dublin to Cork , Cobh - Cork • Cork to Killarney, Galway to Dublin in reserved cars/seats • Hosted tour throughout • Blarney Castle and Gardens • Cobh Heritage Centre • Ring of Kerry Tour • Bunratty Castle and Folk Park • Cliffs of Moher • Kylemore Abbey and Gardens

WHY CHOOSE **RAILTOURS IRELAND** *First Class!*

- ✓ **Car Free - Care Free**
- ✓ **First Class service all the way**
- ✓ **Check-in is 20 mins prior to train departure**
- ✓ **Reserved cars / seats on the train**
- ✓ **Railtours Ireland Host throughout**
- ✓ **Visitor attraction entry tickets included**
- ✓ **Four star standard hotels**
- ✓ **Open return tickets valid for 1 month**
- ✓ **All taxes and service charges included**

DID YOU KNOW

Book online at railtoursireland.com to receive FREE upgrades

- ✓ **Free Hop On - Hop Off Dublin Bus city tour**
- ✓ **Free Breakfast on the Dublin to Cork train, Monday to Friday**
- ✓ **Free upgrade to four star hotel in Killarney (subject to availability)**
- **All our train tickets are round trip. Valid for 1 month - feel free to add extra nights and travel back to Dublin independently**
- **We can arrange extra nights in Dublin, Cork, Killarney, Limerick, Galway and Belfast**
- **We have 41 Tour Options! Lots of choice**



CHECK-IN POINT DUBLIN RAIL STATION

Our Tour Hosts, in Bright Yellow jackets are always on hand to welcome you and to oversee the smooth running of all tour arrangements.





Six Day Tour DH371110

The All Ireland Tour

Check in Dublin Heuston Station for 07.00hrs departure of InterCity train to Cork (breakfast/snack car available). Enjoy a visit to the world renowned Blarney Castle & Gardens and the Queenstown Story at Cobh, the Titanic's last port of call and the rescue harbour for the Lusitania survivors in 1915. After a scenic train journey through the ancient Irish landscape dotted with castles, we transfer by coach to Blarney Castle and Village where we can kiss the famous Blarney Stone known as the "Stone of Eloquence". Enjoy shopping time and lunch (not included) at Blarney Woollen Mills before returning to Cork for a short City Tour and a visit to the famous English Market. We then visit Cobh – the embarkation point for generations of Irish emigrants to the new world including passengers for the Titanic. Experience the "Queenstown Story". Enjoy a scenic rail journey from Cobh to Cork for transfer to Killarney. Overnight in Killarney four star standard hotel.

Day 2

Experience the world renowned Ring of Kerry with its overwhelming mountains and seascapes is one of Ireland's most scenic delights. We travel by coach around the 100mile/179km long Ring of Kerry where every bend reveals some of the most spectacular scenery in Ireland set between the mountains of Kerry 'The Macgillycuddy's Reeks' and the Wild Atlantic coastline. Our day starts in Killarney as we then sweep along the north side of the Iveragh peninsula. Then it's onto the south side, through the villages of Waterville and Sneem, and into the pristine Killarney National Park. Enjoy views of The Skellig Islands where Star Wars "The Force Awakens" was recently filmed. Then we drop down alongside the Black Valley and Moll's Gap, stopping at Ladies View. Lunch stop at traditional Irish pub on this scenic journey (not included). We return to Killarney for your second overnight stay.

Day 3

07.30hrs transfer by road from Killarney to Limerick to visit Bunratty Castle, Cliffs of Moher, 2 overnights in Galway City in three star standard hotel.

Day 4

Depart via Aer Arann mini coach for transfer to Connemara Airport for your short flight to Inis Mór, the largest of the Aran Islands, we enjoy a tour of the Island including a visit to the fortress of Dún Aengus.

Day 5

10.00hrs depart Galway for tour of Connemara, including Kylemore Abbey & Gardens after which we depart Galway by train to Dublin.

Overnight in Dublin City Centre Hotel.

Day 6

Check in Dublin Connolly Station for 07.35hrs departure of newly refurbished Enterprise express service to Belfast (breakfast/snack car available). The famous Causeway Coastal Route Drive, the Giants Causeway, Carrick-a-Rede Rope Bridge all in one day! We arrive in Belfast and then travel by coach north from Belfast along the famous Antrim Coast Road through Ballycastle en-route to the Carrick-a-Rede Rope Bridge. The famous Bushmills Visitor Centre is our lunch stop (not included). We continue along the Causeway Coast, one of the most magical drives in Europe, to the stunning Giant's Causeway. Spend some time climbing over the ancient stones and enjoying the myths and legends associated with this famous attraction. Next we enjoy a photo stop at the huge bastion of Dunluce Castle, then back to Belfast for a short tour before returning back to Dublin. Arriving at Dublin Connolly Station 22.15hrs (10.15pm).

THE ESSENTIALS

Departs :	Monday to Thursday and Saturday
Price:	Adult €999pps Student €899pps
Check-in:	For 07.00am train to Cork
Departure Point:	Information Desk – Heuston Station
Check-in:	For 07.00am train to Cork
Return:	22.15 (10.15pm)
Included:	<ul style="list-style-type: none"> • Rail Travel - Dublin to Cork , Cobh - Cork Cork to Killarney, Galway to Dublin Dublin to Belfast return in reserved cars/seats • Hosted tour throughout • Blarney Castle and Gardens • Cobh Heritage Centre • Ring of Kerry Tour • Bunnratty Castle and Folk Park • Cliffs of Moher • Kylemore Abbey and Gardens • Flight to Inis Mór • Giant's Causeway • Carrig-a-rede rope bridge



1916 2016

1916 Easter Rising

2016 marks the centenary of the 1916 Easter Rising which took place mainly in Dublin. This rebellion by a coalition of The Irish Volunteers led by Patrick Pearse and The Irish Citizen Army led by James Connolly began a series of events which ultimately led to the War of Independence in 1919 and creation in 1921 of the Irish Free State - which saw 26 of Ireland's 32 counties leave the United Kingdom. The Irish Free State subsequently developed into a fully separate and sovereign nation called Ireland or Éire in the Irish language - by 1937. This allowed for Irish neutrality in WW11. A full Republic was achieved by 1949. In 1966 to mark the 50th Anniversary of the Easter Rising the 15 principal Irish Railway Stations were renamed in honour of the fifteen executed leaders of the rebellion. In Dublin Westland Row became Pearse Station, Amiens Street became Connolly Station, Kingsbridge became Heuston Station and Dun Laoghaire became Mallin Station. Cork became Kent Station, Limerick became Colbert Station, Galway became Ceánnt Station, Waterford became Plunkett Station, Bray became Daly Station, Wexford became O'Hanrahan Station, Tralee became Casement Station, Drogheda became McBride Station, Dundalk became Clarke Station and Sligo became MacDiarmada Station.





Four Day Tour LEO9

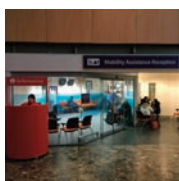
The London to Dublin Package

Visiting London? Why not add a short tour to The Emerald Isle the Eco-friendly way without having to fly or drive!

Travel to Ireland along the classic route by rail through the heart of England, along the lovely North Wales Coast and take a short sea trip on world's largest cruise ferry to Dublin City Centre – all in one day! We include three nights 4 star standard City Centre Hotel and a hop-on hop-off city tour so you can explore Dublin's fair city at your leisure.

PLEASE NOTE: Rail/Ship ticket back to London valid for ONE FULL MONTH from first use. Why not consider adding a Railtour from Dublin one day to nine day to complete your Ireland travel experience.

*Virgin Trains First Class Upgrade from London available from €99 – enquire for details. This tour package is available one way from London.



THE ESSENTIALS

- Departs :** 09.10 Monday to Friday,
Saturday at 08.50
- Price:** Adult €499pps Student €459pps
- Check-in:** Mobility Assistance Reception on main
concourse of London Euston Station
- Departure Point:** London Euston Station
- Included:**
- All travel (rail and ship) London to Dublin return
 - Transfers from/to Dublin Ferry Port
 - Three nights 4 Star standard City Centre Hotel in Dublin - room only
 - Hop-on Hop-off Dublin City tour (2 day ticket)
 - All taxes and service charges



*Emerald Isle Express
heading south*

THE EMERALD ISLE EXPRESS – DCST2016 THE ORIGINAL RAIL CRUISE AND CASTLE TOUR

An exclusive rail land cruise and castle tour through Ireland on your own special private heritage train. Overnighing in luxury five star Irish Castle, City and Country Hotels. This all-inclusive tour is limited to 50 guests. A unique Ireland vacation to remember!

DEPARTURE ON SUNDAY SEPTEMBER 25TH 2016

DAY 1: GATHERING DAY - DUBLIN

Gathering Day in Dublin. Individual transfers from the airport to your hotel. Welcome reception, dinner and overnight stay in the five star Merrion Hotel, in the heart of Dublin city.

DAY 2: DUBLIN TO WATERFORD

Champagne reception at Connolly Station before boarding the Emerald Isle Express. Cruise by rail down Ireland's scenic east coast through counties Wicklow and Wexford to Waterford City. Private visit to Waterford Crystal, dinner and overnight stay in Waterford Castle.

DAY 3: WATERFORD TO CORK

By rail through the Suir Valley in County Tipperary to Cork and a visit to Blarney Castle and Cork City's English Market. Overnight stay in the five star Fota Island Resort.

DAY 4: CORK TO KERRY

Visit Cobh, Titanic's last port of call and then rail to Killarney for a tour of The Ring of Kerry. Overnight in the five star Killarney Park Hotel situated in the centre of Killarney.

DAY 5: KILLARNEY TO LIMERICK

By rail from Killarney to Limerick and the Wild Atlantic coast where we visit the spectacular Cliffs of Moher. Medieval Banquet in Bunratty Castle. Overnight stay in the luxurious five star Dromoland Castle Hotel.

Day 6: FREE DAY

A day of leisure at Dromoland Castle or an optional rail tour to Galway City for exploring and shopping and 2nd night at Dromoland Castle.

DAY 7: WESTPORT TO DUBLIN

Tour of Connemara, lunch at the beautiful Ballynahinch Castle Hotel. On to Westport on the shores of Clew Bay and rail across Ireland back to Dublin with dinner on board. Overnight in Dublin's five star Shelbourne hotel.

Day 8 : Departure Day

Scattering Day. Individual transfers from your hotel to Dublin Airport. Extra nights available in Dublin on request if you would like to explore fair Dublin city.

WHAT'S INCLUDED?

- Personal meet & greet at Dublin Airport
- Transfers to & from Airport to your 5* Dublin Hotel
- Welcome reception at the Merrion Hotel
- Exclusive Dublin City Tour
- All meals included
- Morning coffee & afternoon tea each day
- All drinks on the train
- Side tours to Waterford Crystal, Blarney Castle, Cobh Heritage, Ring Of Kerry, Cliffs of Moher, Galway Bay & Kylemore Abbey
- Medieval Banquet at Bunratty Castle, Co. Clare
- Renowned Railtours Ireland Host throughout
- All your luggage taken care of from start to finish
- All taxes and service charges



Price: €4,999 per person sharing
(Single Room Supplement: €1,129)

Visit - railtoursireland.com/railcruiseandcastletour

WHY CHOOSE RAILTOURS IRELAND *First Class!*

- ✓ Car Free - Care Free
- ✓ First Class service all the way
- ✓ Check-in is 20 mins prior to train departure
- ✓ Reserved cars / seats on the train
- ✓ Raitours Ireland Host throughout
- ✓ Visitor attraction entry tickets included
- ✓ Four star standard hotels
- ✓ Open return tickets valid for 1 month
- ✓ All taxes and service charges included

BOOK TODAY & TRAVEL TOMORROW

Hotel: Your concierge / reception will make your booking

Online: raitoursireland.com

Phone: +353 1 856 0045

Toll Free:(USA & Canada)1877 451 4783

Freephone:(UK): 0800 328 2899

Email: info@raitoursireland.com

Visit Us: Raitours Ireland First Class Welcome Centre
16 Amiens Street, Dublin D01XD21 Ireland.
(directly opposite Connolly Station)

Terms & Conditions The following conditions apply to bookings. See full terms and conditions online.

Raitours Ireland is dedicated to providing a professional and personalised service. It is our intention to operate all tours as advertised. However, due to operational reasons it may, on occasion, be necessary to alter certain itineraries.

Raitours Ireland cannot be held liable in the event of an attraction being unexpectedly closed. Student discounts can only be given if requested at time of booking. - no discounts can be given retrospectively. Raitours Ireland cannot be held responsible for customers not having the correct visa documentation to enter Ireland or Northern Ireland.

Raitours Ireland reserves the right to cancel tours if industrial or other action affects any of the components which make up our tour or if there is insufficient demand. We reserve the right to terminate a tour if circumstances demand. Please note special conditions for DH05STW, DH711, DH371110, DH3711910N

Raitours Ireland can not be held responsible for any damage, loss, accident, delay, irregularity, injury to person or property whatsoever or howsoever caused arising out of or in connection with excursion, tour or transfer. Passengers travel at their own risk and our liability for any claim whatsoever is limited only to the price of the tour. 24 hours notice must be given in order to get a refund on any tour. 48 hours notice if the tour includes accommodation.

All refunds are subject to a 10% administration charge.

We reserve the right to refuse admission to any tour and to terminate a tour if circumstances demand. Iarnród Éireann/CIE shall in no way be responsible for the activities, acts or defaults of Raitours Ireland and cannot be held responsible or liable for any damage (whether direct, indirect, incidental, consequential), loss, accident, delay, irregularity, death, injury to person or property howsoever or whatsoever caused arising out of or in connection with the provision of the services offered by Raitours Ireland or in any manner whatsoever save to the extent of any liability incurred by Iarnród Éireann/CIE pursuant to the provision by it of rail services subject to the terms and conditions of the CIE Bye-laws and the Iarnród Éireann Conditions of Carriage of Passengers and their Luggage.

Iarnród Éireann/CIE is not responsible or liable for the accuracy of any information, data or opinion or statements made on this promotional material/website. Iarnród Éireann/ CIE disclaims all liability which might arise out of, or in connection with the use or reliance on the content or performance of, or information on or services provided on or through this promotional material/ website.



Hosted Raitours for
the Independent Traveller
RAILTOURSIRELAND.COM

In association with



Iarnród Éireann
Irish Rail



Valid from Feb 2016