

# RAILTOURS IRELAND

*First Class!*

**GREAT ONE DAY TOURS TO NINE DAY TOURS**

**New for 2017 -New 3 Day 2 Night tours to Derry and to "cool" County Donegal**



**Explore Ireland's Ancient East to the Wild Atlantic Way with [railtoursireland.com](http://railtoursireland.com)**

## **Must see attractions**

- Cliffs of Moher & Bunratty Castle
- Blarney Castle
- Ring of Kerry
- Giant's Causeway
- Game of Thrones
- Waterford & Kilkenny
- Aran Islands & Galway Bay
- Ballykissangel, (Avoca) & Glendalough



**Car Free - Care Free!**

**BOOK TODAY - TRAVEL TOMORROW**



**Beautiful Glendalough SEE TOUR DC08**

Jump into  
**Ireland**

In association with



**Iarnród Éireann**  
**Irish Rail**



IRELAND'S  
ANCIENT EAST™



WILD ATLANTIC WAY  
SLÉ AN ATLANTACH FÉINN



## **Incredible Value Dublin Apartment!**

**As part of the aim of Railtours Ireland First Class is to expand our Dublin accommodation options we are delighted to offer a selection of luxury fully equipped self-catering apartments.**

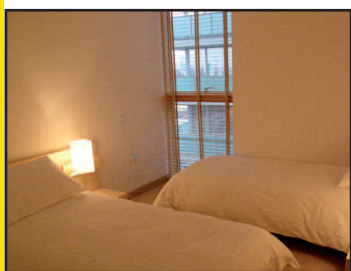
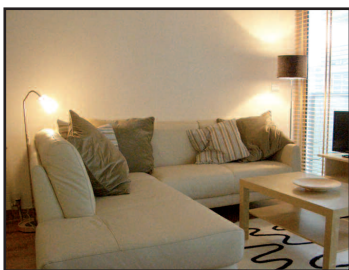
**This is our "Spencer Dock" apartment situated in Dublin's exciting new Docklands Quarter**

Situated next to Dublin's National Convention Centre, and located right beside the Luas' tramlink' stop at Spencer Dock - the apartments are close to the City Centre and are linked directly by tram to Connolly and Heuston Railway Stations.

**The Apartment is on the second floor and has two balconies.**

**There is an elevator and a Concierge.**

**Our apartment is only available in conjunction with a Railtour booking.**



### **THE ESSENTIALS**

- ✓ €299 per night (minimum two night consecutive stay)
- ✓ Sleeps 6 / 7 (Sofa bed available)
- ✓ City centre location
- ✓ Located on LUAS (tram) stop
- ✓ Fully equipped throughout
- ✓ 3 Bedrooms (2 Doubles & 1 twin), 3 Bathrooms
- ✓ All linens and towels included
- ✓ Free Wi-Fi
- ✓ Non Smoking apartment



## One Day Tour DH06

### Limerick, The Cliffs of Moher, Bunnratty Castle, The Burren & Galway Bay

Check in Dublin Heuston Station for 07.00hrs departure of InterCity train to Limerick. (breakfast/snack car available). This day tour will take you to the most popular visitor attraction outside of Dublin – the Cliffs of Moher, on the Wild Atlantic Way. Sit back and relax as your train glides through the heart of Ireland, an ancient landscape littered with castles. We join our coach at Limerick which sits on the mighty river Shannon and visit Bunnratty Castle & Folk Park Village en-route to our lunch stop, Gus O'Connor's famous seafood pub in Doolin (not included). Then, the spectacular Cliffs of Moher, some of the highest sea cliffs in Europe. Enjoy a short hike along the cliff path rising 215 metres above the pounding Atlantic Ocean. We continue along the Wild Atlantic Way through the lunar landscape of the Burren region, a UNESCO Geo-Park famous for its fauna and flora. We then head along the shores of Galway Bay for a flavour of Galway City traffic permitting. We join your InterCity train at Galway Ceánnt Station, for our train to Dublin at 19.20hrs departure. Arriving at Dublin Heuston Station 21.45hrs (9.45pm).

#### THE ESSENTIALS

**Departs:** Daily - Monday to Saturday year round

**Price:** Adult €109 Student €98

**Check In:** For 07.00hrs train to Limerick

**Departure Point:** Information Desk – Heuston Station

**Return:** 21.45hrs (9.45pm)

**Included:**

- Rail Travel - Dublin to Limerick  
Galway to Dublin in reserved cars
- Hosted tour throughout
- Bunnratty Castle & Folk Park
- Cliffs of Moher







## One Day Tour DH02

### Cork, Blarney Castle, Cobh & the Titanic Story

Check in Dublin Heuston Station for 07.00hrs departure of InterCity train to Cork (breakfast/snack car available). Kiss the Blarney Stone! Travel south from Dublin to Cork, Ireland's southern capital. Enjoy a visit to the world renowned Blarney Castle & Gardens and the Queenstown Story at Cobh, the Titanic's last port of call and the rescue harbour for the Lusitania survivors in 1915. After a scenic train journey through the ancient Irish landscape dotted with castles, we transfer by coach to Blarney Castle where we can kiss the famous Blarney Stone known as the "Stone of Eloquence". Enjoy shopping time and lunch (not included) at Blarney Woollen Mills and village before returning to Cork for a short city tour and a visit to the famous English Market. We then visit Cobh – the embarkation point for generations of Irish emigrants to the new world including passengers for the Titanic. Experience the "Queenstown Story". Enjoy a scenic rail journey from Cobh to Cork Kent Station to connect with your InterCity train travelling back to Dublin. Arriving at Dublin Heuston Station at 20.00hrs (8.00pm).

#### THE ESSENTIALS

**Departs:** Daily - Monday to Saturday year round

**Price:** Adult €109 Student €98

**Check-in :** For 07.00hrs train to Cork

**Departure Point:** Information Desk – Heuston Station

**Return:** 20.00hrs (8.00pm)

**Included:**

- Rail Travel - Dublin to Cork  
Cobh to Cork, Cork to Dublin  
in reserved cars
- Hosted tour throughout
- Blarney Castle and Gardens
- English Market Cork City
- Cobh Heritage Centre







## One Day Tour DH05GD

### The Gap of Dunloe - Killarney's Lakes, Islands and Mountain Passes

Check in Dublin Heuston Station for 07.00hrs depart of InterCity train to Killarney. On arrival in Killarney at 10.15hrs, transfer from Killarney to Ross Castle. From here the tour begins by traditional open boat on Lough Leane. Passing Innisfallen, Ross Island and under the Bricin Bridge towards the Meeting of the Waters at the old Weir Bridge. The tour continues along the Long Range towards Eagles Nest Mountain and onto the Upper Lake. A stop over here for a light snack and refreshments at Lord Brandans cottage (not included). Then travel by pony and trap through the Black Valley and Gap of Dunloe finishing up at Kate Kearneys cottage. At "Kate's" Traditional Irish Pub you will enjoy the tradition of hospitality and is the perfect finish to a day of memorable sight seeing. Transfer from here at 16.15hrs (4.15pm) to Killarney Railway Station, arrival at 16.35hrs. Dublin train departs at 17.37 hrs (5.37pm) so there is normally time for a quick flavour of Killarney town centre which is close to the station. Arriving at Dublin Heuston Station 21.00hrs (9.00pm).

**Please note: Guests need to be prepared for varying weather conditions and rain gear is essential to enjoy this tour. Regretfully this tour is not suitable for guests with physical disabilities.**

#### THE ESSENTIALS

- Departs:** Daily Monday to Saturday year round
- Price:** Adult €159 Student €143
- Check-in:** For 07.00hrs train to Killarney
- Departure Point:** Information Desk – Heuston Station
- Return:** 21.00hrs (9.00pm)
- Included:**
- Rail travel - Dublin to Killarney in reserved cars/seats
  - Hosted tour throughout
  - Gap of Dunloe tour including 14 mile voyage across all three lakes of Killarney
  - Seven mile pony and trap trek
  - All transfers



## One Day Tour DC10

### The Giant's Causeway, Glens of Antrim & Wild Atlantic Coast

Check in Dublin Connolly Station for 07.35hrs departure of newly refurbished Enterprise Express service to Belfast (breakfast/snack car available). The famous Causeway Coastal Route Drive, the Giants Causeway, Carrick-a-Rede Rope Bridge all in one day! We arrive in Belfast and then travel by coach north from Belfast along the famous Antrim Coast Road through Ballycastle en-route to the Carrick-a-Rede Rope Bridge. The famous Bushmills Visitor Centre is our lunch stop (not included). We continue along the Causeway Coast, one of the most magical drives in Europe, to the stunning Giant's Causeway. Spend some time climbing over the ancient stones and enjoying the myths and legends associated with this famous attraction. Next we enjoy a photo stop at the huge bastion of Dunluce Castle, then back to Belfast for a short tour before returning back to Dublin. Arriving at Dublin Connolly Station 22.15hrs (10.15pm). 20.15 (8.15pm) - Winter months.



#### THE ESSENTIALS

<b>Departs:</b>	<b>Daily - Monday to Saturday year round</b>
<b>Price:</b>	<b>Adult €109 Student €98</b>
<b>Check-in :</b>	<b>For 07.35hrs Enterprise Express to Belfast</b>
<b>Departure Point:</b>	<b>Information Desk – Connolly Station</b>
<b>Return:</b>	<b>22.15hrs (10.15pm) - Jan to mid March &amp; Nov Dec 20.15 (8.15pm)</b>
<b>Included:</b>	<ul style="list-style-type: none"><li>• Rail Travel - Dublin to Belfast return in reserved cars</li><li>• Hosted tour throughout</li><li>• Carrick-A-Rede Rope Bridge Crossing</li><li>• Dunluce Castle photostop</li><li>• Giant's Causeway</li></ul>

## One Day Tour DH05

### The Ring of Kerry

Check in Dublin Heuston Station for 07.00hrs for your Intercity train to Killarney (breakfast/snack car available). Enjoy the train ride through the heart of Ireland to Killarney; the gateway to The Ring of Kerry. We continue by coach around the 100mile/179km long Ring of Kerry where every bend reveals some of the most spectacular scenery in Ireland set between the mountains of Kerry 'The Macgillycuddy's Reeks' and the Wild Atlantic coastline. Our day starts in Killarney as we then sweep along the north side of the Iveragh peninsula. Then it's onto the south side, through the villages of Waterville and Sneem, and into the pristine Killarney National Park. Enjoy the views of The Skellig Islands, where Star Wars "The Force Awakens" was recently filmed. Then we drop down alongside the Black Valley and Moll's Gap, stopping at Ladies View. Lunch stop will be at a traditional Irish Pub (not included) on this scenic journey. We return to Killarney for our train back to Dublin. Arriving at Dublin Heuston Station 21.00hrs (9.00pm).



#### THE ESSENTIALS

<b>Departs:</b>	<b>Daily - Monday to Saturday year round</b>
<b>Price:</b>	<b>Adult €109 Student €98</b>
<b>Check-in:</b>	<b>For 07.00hrs train to Killarney</b>
<b>Departure Point:</b>	<b>Information Desk – Heuston Station</b>
<b>Return:</b>	<b>21.00hrs (9.00pm)</b>
<b>Included:</b>	<ul style="list-style-type: none"><li>• Rail Travel - Dublin to Killarney return in reserved cars/seats</li><li>• Hosted tour throughout</li><li>• Ring of Kerry scenic tour</li></ul>



## One Day Tour DC10T

### Titanic Belfast and Belfast City

Check in Dublin Connolly Station for 07.35hrs departure of newly refurbished Enterprise Express service to Belfast (breakfast/snack car available). On arrival in Belfast your tour host provides you with tickets for the Hop-on-Hop-off City Tour. You are then free to explore this fascinating city at your leisure. See close up the world famous political murals depicting "The Troubles" or visit Crumlin Road Gaol and see the condemned cell. Write your thoughts on the Peace Wall alongside those of Bill Clinton and the Dalai Lama. Visit Titanic Belfast, a monument to Belfast's maritime heritage on the site of the former Harland & Wolff shipyard in the city's Titanic Quarter where the RMS Titanic was built. Moored very close to the Titanic Visitor Centre is the very last original White Star Line ship; the SS Nomadic now open to the public (admission not included). Return to Dublin on any train. Last train is at 20.05 (8.05pm) arriving 22.15 (10.15p.m.)



### THE ESSENTIALS

<b>Departs:</b>	<b>Daily - Monday to Saturday year round</b>
<b>Price:</b>	<b>Adult €119 Student €109</b>
<b>Check-in :</b>	<b>For 07.35hrs Enterprise Express to Belfast</b>
<b>Departure Point:</b>	<b>Information Desk – Connolly Station</b>
<b>Return:</b>	<b>22.15hrs (10.15pm) Earlier trains available</b>
<b>Included:</b>	<ul style="list-style-type: none"><li>• <b>Rail Travel - Dublin to Belfast return in reserved cars</b></li><li>• <b>Hosted tour throughout</b></li><li>• <b>Hop On - Hop Off City Tour</b></li><li>• <b>Titanic Belfast admission</b></li></ul>

## One Day Tour DH11

### Aran Islands & Scenic Flight over Galway Bay

Check in Dublin Heuston Station for 07.35hrs departure of InterCity train to Galway Ceánnt Station. This tour offers a unique opportunity to visit Inis Mór, the largest of the three Aran Islands. Set on the west coast of Ireland in the mouth of Galway Bay, Inis Mór is a bastion of traditional Irish language, culture and music, unique in its geology, archaeology and history. Upon arriving into Galway we take a short transfer to Connemara Airport for short return flight to Inis Mór (meaning big island). We enjoy a tour of the island including a visit to the fortress of Dún Aengus (admission included), the most magnificently and dramatically situated Celtic Stone fort in Western Europe standing precariously on the edge of a 100 meter high cliff overlooking the Atlantic Ocean. We arrive back at the village of Kilronan with time for lunch (not included) or visit the Aran Sweater Market. We return to Galway with some time to explore the city centre. Arriving at Dublin Heuston Station 21.45hrs (9.45pm).



*\* should weather conditions be such as to curtail flights you will be taken on an alternative tour to Connemara and refunded the difference. No further refund available should you decide not to go to Connemara for any reason, this is a condition of booking.*

### THE ESSENTIALS

<b>Departs:</b>	<b>Daily - Monday to Saturday year round</b>
<b>Price:</b>	<b>Adult €149 Student €135</b>
<b>Check-in:</b>	<b>For 07.35hrs train to Galway</b>
<b>Departure Point:</b>	<b>Information Desk – Heuston Station</b>
<b>Return:</b>	<b>21.45hrs (9.45pm)</b>
<b>Included:</b>	<ul style="list-style-type: none"><li>• <b>Rail Travel - Dublin to Galway return in reserved cars/seats</b></li><li>• <b>Transfers to and from Connemara Airport</b></li><li>• <b>Hosted tour throughout</b></li><li>• <b>Aer Arann Flight / Tour of Inis Mór</b></li></ul>



**DAY TOUR PLUS OPTIONS**  
*have a sleep in and get a later train!*

***Not a morning person?***

**Try our overnight tours with later departures.  
Take an afternoon train, and then overnight in  
one of our great Irish cities or towns and join our  
day tour the following day.**

**DH02AN Day Tour Plus - Cork City & Blarney & Cobh**

Depart Dublin at 14:00hrs and travel to Cork City – Cork City is the original foodie capital of Ireland has excellent restaurants, bars and nightlife to discover. Overnight in a city centre 4\* hotel and join the Blarney Castle, Cobh & the Titanic Story Day Tour the following day.

**DH05AN Day Tour Plus - Killarney & The Ring Of Kerry**

Depart Dublin at 15:00hrs and travel to Killarney, the gateway to the 'Kingdom'. Killarney is a buzzing town with lots of traditional music outpouring from the pubs and restaurants. Overnight in a city centre 4\* hotel and join the Ring of Kerry Day Tour the following day.

**DH04AN Day Tour Plus - Connemara & Galway Bay**

Depart Dublin at 13:25hrs and travel to Galway, the gateway to the West of Ireland. Enjoy some local seafood in one of the many restaurants in Galway. Overnight in a city centre 4\* hotel and join the Connemara Day Tour the following day.

**DH06AN Day Tour Plus - Limerick City & the Cliffs of Moher**

Depart Dublin at 15:25hrs and travel to Limerick, a lady of a city, with a lively mix of sport, culture and great pubs thrown in for good measure. Overnight in a city centre 4\* hotel and join the Cliffs of Moher Day Tour the following day.

**DC10AN Day Tour Plus - Belfast City & Giants Causeway**

Depart Dublin at 13:20hrs and travel to Belfast, the capital city of Northern Ireland. Small but with a big heart, super-cool Belfast is one of Europe's true renaissance cities. Overnight in a city centre 4\* hotel and join our Giants Causeway Tour the following day.

*Please visit [www.railtoursireland.com](http://www.railtoursireland.com) for further details  
on our Day Tour Plus Options*

**THE ESSENTIALS**

- ✓ **Afternoon departures**
- ✓ **All tours are ADULT €199pps  
except DC10AN is ADULT €219pps**
- ✓ **All round trip train tickets**
- ✓ **Reserved seats on the train**
- ✓ **Overnight accommodation**





## Two Day Tour DC10G

### Belfast & Game of Thrones & Giants Causeway

#### Day 1

Check in Dublin Connolly Station for 07.35hrs departure of newly refurbished Enterprise Express service to Belfast (breakfast available). On arrival in Belfast your tour host provides you with tickets for the Hop-on-Hop-off City Tour. You are then free to explore this fascinating city at your leisure. See close up the world famous political murals depicting "The Troubles" or visit Crumlin Road Gaol. Write your thoughts on the Peace Wall alongside those of Bill Clinton and the Dalai Lama. Visit Titanic Belfast, a monument to Belfast's maritime heritage on the site of the former Harland & Wolff shipyard in the city's Titanic Quarter where the RMS Titanic was built. Moored very close to the Titanic Visitor Centre is the very last original White Star Line ship; the SS Nomadic now open to the public (admission not included). Overnight: 4\* Hotel in downtown Belfast including full Irish breakfast (Ulster fry).

#### Day 2

At 09.00hrs we depart Belfast and travel north along the scenic Causeway Route on our Game of Thrones tour where we visit seven iconic sites from Series 1 to 4. We visit the Caves where Melisandre of Asshai gave birth to her "shadow baby" and Ballycastle the native home of Lady Catelyn Stark and Varys. A real wow is The Kings Road locally known as The Dark Hedges, where Arya Stark escaped from Kings Landing dressed as a boy. We break for Lunch (not included) at the cosy Fullerton Arms in Ballintoy/Pyke Harbour where several major scenes were filmed. The last stop is at the renowned Giant's Causeway a UNESCO World Heritage Site and then back to Belfast for a short tour before returning to Dublin. Arriving at Dublin Connolly Station 22.15hrs (10.15pm) in winter return at 20.15.

### THE ESSENTIALS

**Departs Dublin:** Every Tuesday, Friday & Saturday all year

**Price:** Adult €289pps Student €260pps

**Check-in:** For 07.35hrs Enterprise Express to Belfast

**Departure Point:** Information Desk – Connolly Station

**Return:** 22.15 (10.15pm) Winter: 20.15 (8.15pm)

**Included:**

- Rail Travel - Dublin to Belfast return in reserved cars/seats
- Hosted tour throughout
- Hop On - Hop Off City Tour
- Titanic Belfast admission
- Game of Thrones tour

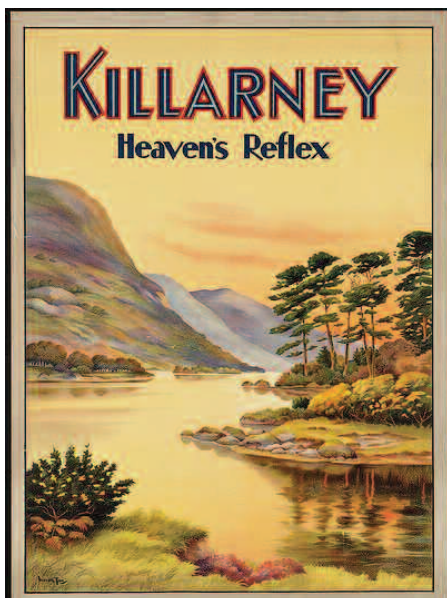


## Two Day Tour DH03

### Blarney Castle, Cobh, Killarney & Ring of Kerry

#### Day 1

Check in Dublin Heuston Station for 07.00hrs departure of InterCity train to Cork (breakfast/snack car available). Enjoy a visit to the world renowned Blarney Castle & Gardens and the Queenstown Story at Cobh, the Titanic's last port of call and the rescue harbour for the Lusitania survivors in 1915. After a scenic train journey through the ancient Irish landscape dotted with castles, we transfer by coach to Blarney Castle where we can kiss the famous Blarney Stone known as the "Stone of Eloquence".



Enjoy shopping time and lunch (not included) at Blarney Woollen Mills and Village before returning to Cork for a short City Tour and a visit to the famous English Market. We then visit Cobh – the embarkation point for generations of Irish emigrants to the new world including passengers for the Titanic. Experience the "Queenstown Story". Enjoy a scenic rail journey from Cobh to Cork for transfer to Killarney. Overnight in Killarney four star standard hotel.

#### Day 2

Experience the world renowned Ring of Kerry with its overwhelming mountains and seascapes is one of Ireland's most scenic delights. We travel by coach around the 100mile/179km long Ring of Kerry where every bend reveals some of the most spectacular scenery in Ireland set between the mountains of Kerry 'The Macgillycuddy's Reeks' and the Wild Atlantic coastline. Our day starts in Killarney as we then sweep along the north side of the Iveragh peninsula. Then it's onto the south side, through the villages of Waterville and Sneem, and into the pristine Killarney National Park. Then we drop down alongside the Black Valley and Moll's Gap, stopping at Ladies View. We return to Killarney to connect with the train back to Dublin. Arriving at Dublin Heuston Station 21.00hrs (9.00pm).

### THE ESSENTIALS

**Departs:** Daily Monday to Saturday year round

**Price:** Adult €279pps Student €251pps

**Check-in:** For 07.00 hrs train to Cork

**Departure Point:** Information Desk – Heuston Station

**Return:** 21.00 (9.00pm)

**Included:**

- Rail Travel-Dublin/Cork, Cobh/Killarney, Killarney to Dublin in reserved cars/seats
- All Accommodation
- Hosted tour throughout
- Blarney Castle and Gardens
- Cobh Heritage Centre
- Ring of Kerry Tour





## Three Day Tour DH36

### Cork, Blarney Castle, Ring of Kerry, Cliffs of Moher

#### Day 1

Check in Dublin Heuston Station for 07.00hrs departure of InterCity train to Cork (breakfast/snack car available). Enjoy a visit to the world renowned Blarney Castle & Gardens and the Queenstown Story at Cobh, the Titanic's last port of call and the rescue harbour for the Lusitania survivors in 1915. After a scenic train journey through the ancient Irish landscape dotted with castles, we transfer by coach to Blarney Castle where we can kiss the famous Blarney Stone known as the "Stone of Eloquence". Enjoy shopping time and lunch (not included) at Blarney Woollen Mills and Village before returning to Cork for a short City Tour and a visit to the famous English Market. We then visit Cobh – the embarkation point for generations of Irish emigrants to the new world including passengers for the Titanic. Experience the "Queenstown Story". Enjoy a scenic rail journey from Cobh to Cork for transfer to Killarney. Overnight in Killarney at a four star standard hotel.

#### Day 2

Experience the world renowned Ring of Kerry with its overwhelming mountains and seascapes is one of Ireland's most scenic delights. We travel by coach around the 100mile/179km long Ring of Kerry where every bend reveals some of the most spectacular scenery in Ireland set between the mountains of Kerry 'The Macgillycuddy's Reeks' and the Wild Atlantic coastline. Our day starts in Killarney as we then sweep along the north side of the Iveragh peninsula. Then it's onto the south side, through the villages of Waterville and Sneem, and into the pristine Killarney National Park. Enjoy views of The Skellig Islands where Star Wars "The Force Awakens" was recently filmed. Then we drop down alongside the Black Valley and Moll's Gap, stopping at Ladies View. Lunch stop at traditional Irish pub on this scenic journey (not included). We return to Killarney for your second overnight stay.

#### Day 3

07.30hrs transfer by road from Killarney to Limerick passing through the lovely village of Adare. In Limerick we have a short tour of the treaty city and setting for the movie "Angela's Ashes". We head north to Bunratty Castle and Folk Park. Our next stop is at a traditional Irish pub, O'Connor's of Doolin, with its reasonable priced seafood and pub grub - try the chowder (not included). It is a short drive from here to the majestic Cliffs of Moher; from here we enter the unique lunar landscape of the Burren rounding Black Head before heading along the shores of Galway Bay (our route is regarded as one of Europe's top ten coastal drives). Guests have a short time in Galway City, traffic permitting, before returning by train to Dublin. Arriving at Dublin Heuston Station 21.45hrs (9.45pm).

### THE ESSENTIALS

<b>Departs :</b>	<b>Monday to Thursday and Saturday</b>
<b>Price:</b>	<b>Adult Low €499pps High €519 pps</b> <b>High Season: June to September</b>
<b>Check-in:</b>	<b>For 07.00am train to Cork</b>
<b>Departure Point:</b>	<b>Information Desk – Heuston Station</b>
<b>Return:</b>	<b>21.45 (9.45pm)</b>
<b>Included:</b>	<ul style="list-style-type: none"><li>• Rail Travel-Dublin/Cork, Cobh/Killarney, Galway to Dublin in reserved cars/seats</li><li>• All Accommodation</li><li>• Hosted tour throughout</li><li>• Blarney Castle and Gardens</li><li>• Cobh Heritage Centre</li><li>• Ring of Kerry Tour</li><li>• Bunratty Castle and Folk Park</li><li>• Cliffs of Moher</li></ul>





## Three Day Tour DH05STW

### "Star Wars" - The Skellig Islands, Ring of Kerry and Wild Atlantic Experience

#### Day 1

Check in Dublin Heuston Station for 07:00hrs departure of your Intercity train from Dublin to Killarney. On arrival in Killarney we join our luxury coach for the first part of our Ring Of Kerry scenic tour. Lunchtime (circa 13:00hrs/1.00pm) sees us arrive at the small market town of Cahersiveen at the entrance of Kells Bay on the Wild Atlantic Way. Check in to 5\* rated QC Boutique Townhouse on the main street of Cahersiveen. Afternoon free. Dinner at QC's award winning restaurant is included on evening one. Overnight in QC Boutique Townhouse, winner of the Trip Advisor Travellers Choice Awards 2016.

#### Day 2

Start the day with QC's substantial continental breakfast in your room. 09:00hrs transfer to Portmagee / Skellig Experience and jetty for 45 minute and 7 miles boat trip to Skellig Michael, a UNESCO World Heritage Site and recent movie location for Star Wars – The Force Awakens. This starkly beautiful rock / island was the extremely isolated home early Irish Christian monks in the early 6th Century and is traversed by a stone staircase that clings precariously to the rock. The monastery is made up of six dry stone beehive huts and two boat shaped Oratory's. Nowadays the only inhabitants are the myriad species of wild seabirds. We have around three hours to explore this extraordinarily beautiful location - enjoy your packed lunch. Arrival back to Portmagee mid-afternoon and transfer to QC Boutique Townhouse for the evening in which you are free to discover the many local pubs of Cahersiveen some of which have traditional Irish music. Your hosts in QC's will be happy to advise you on evening dining options and entertainment.

#### Day 3

Start the day with QC's substantial continental breakfast in your room. Your morning is free and your hosts will advise you on local walks and other activities. 13:00hrs/1.00pm pick up for remainder of Ring of Kerry tour including lunch stop (not included) shortly after. After completing the Ring of Kerry tour you will arrive back to Killarney in time for your return train to Dublin. Arriving at Dublin Heuston Station 21:00hrs (9.00pm). Overnight options in Killarney are available. Your return train ticket is valid for one month.



QC Boutique Townhouse, Bar & Seafood Restaurant, Cahersiveen, Co. Kerry





## **\*Extremely important information about this tour\* Special Conditions**

**On Day 2 the boat journey to the Skellig Islands is weather dependent and can only be confirmed as possible on that morning. In the event of adverse weather conditions and depending on local sea conditions there will be two alternative options offered.**

**Firstly if it's unsafe to put to sea at all we will provide an in depth local tour including the Skellig Visitor Experience Centre and the Skellig Ring Atlantic drive. There will be a refund of €30.00 per person in this event.**

**Secondly it may be safe to put to sea but unsafe to land on Skellig Michael, in this case the boat will tour around both islands, allowing close up views of the birds and sealife including seals, puffins and nesting birds. There will be no refund in this case.**

- It is important to note that these are booking conditions and by reserving this tour you agree to this.**
- This is a very special tour and is not for the faint hearted. A degree of personal fitness and mobility is required. Regrettably we cannot accommodate wheelchairs etc.**
- There are NO facilities whatsoever including bathrooms on Skellig Michael.**

## **THE ESSENTIALS**

<b>Departs:</b>	<b>Daily Monday to Saturday mid May-Sept</b>
<b>Price:</b>	<b>Adult €599 minimum booking 2 adults sharing</b>
<b>Check-in:</b>	<b>For 07.00am train to Killarney</b>
<b>Departure Point:</b>	<b>Information Desk – Heuston Station</b>
<b>Return:</b>	<b>21.00 (9.00pm)</b>
<b>Included:</b>	<ul style="list-style-type: none"><li><b>• Hosted Rail travel Dublin to Killarney Killarney to Dublin in reserved cars/seats</b></li><li><b>• Ring of Kerry tour</b></li><li><b>• 2 nights QC's Boutique Townhouse B &amp; B</b></li><li><b>• One dinner, one packed lunch</b></li><li><b>• All transfers, local tours and boat trips* (see special conditions above)</b></li></ul>



# NEW FOR 2017

**We are delighted to present for the first time ever an independent tour to the CITY OF DERRY - with a flavour of Belfast on the way - fantastic value!**



## **Three Day Tour DC10TD**

**The City of Derry taking in Belfast/Titanic en route**

### **Day 1**

Check in Dublin Connolly Station for 07.35hrs departure of newly refurbished Enterprise Express service to Belfast (breakfast/snack car available). On arrival in Belfast your tour host provides you with tickets for the Hop-on-Hop-off City Tour. You are then free to explore this fascinating city at your leisure. See close up the world famous political murals depicting "The Troubles" or visit Crumlin Road Gaol and see the condemned cell. Write your thoughts on the Peace Wall alongside those of Bill Clinton and the Dalai Lama. Visit Titanic Belfast, a monument to Belfast's maritime heritage on the site of the former Harland & Wolff shipyard in the city's Titanic Quarter where the RMS Titanic was built. Moored very close to the Titanic Visitor Centre is the very last original White Star Line ship; the SS Nomadic now open to the public (admission not included). Late afternoon we depart by train to Derry or as it is known "The Maiden City". Enjoy one of the great rail journeys of Ireland as your train passes along the spectacular North Atlantic Coastal route from Coleraine to Derry on the banks of the River Foyle. On arrival in Derry short transfer by shuttle bus to city centre terminal adjacent to your four star hotel either The City Hotel or The Maldron Hotel. Enjoy dinner, bed and breakfast at your hotel.

### **Day 2**

At leisure to explore this historical walled city, we include a Hop On - Hop Off bus tour for your enjoyment. See the Guildhall, Free Derry Corner and cross the River Foyle by The Millenium Peace Bridge - perhaps take a bus trip into neighbouring County Donegal. Eat out at one of Derry's many and varied cafés and restaurants enjoy traditional Irish music at one of the friendly city centre pubs.

### **Day 3**

After a full Irish breakfast at your hotel, you can return by train via Belfast to Dublin per any scheduled train from Derry. Your train ticket is valid for 3 days and covers all rail and bus services in Northern Ireland.



## THE ESSENTIALS

**Departs :** Monday to Saturday

**Price:** Adult Low €299pps High €399 pps  
High Season: June to September

**Check-in:** For 07.35am train to Belfast

**Departure Point:** Information Desk – Connolly Station

**Return:** Anytime within three days

**Included:**

- Rail Travel - Dublin to Belfast roundtrip in reserved cars/seats on outward journey
- Hosted tour to Belfast from Dublin
- Hop On - Hop Off tour of Belfast
- Entrance Titanic Visitors Centre, Belfast
- Three days unlimited travel from Belfast on all Translink rail and bus services
- Two nights four star hotel in Derry
- One dinner and two Full Irish Breakfast in Derry hotel
- Hop On - Hop Off tour of Derry



*The Peace Bridge*



*Titanic Belfast*



# NEW County Donegal Top Rated!

We are delighted to offer an independent tour to the luxury Harvey's Point Hotel, voted No. 1 in Ireland on Trip Advisor! for the past five years. Situated in County Donegal "Ireland's Coolest\* County"

\*according to National Geographic



## Three Day Independent Tour DC10TDHP

(includes all rail, transfers, Titanic and two nights Dinner, Bed and Breakfast)

### The Hills of Donegal via Belfast/Titanic and Derry

#### Day 1

Check in Dublin Connolly Station for 07.35hrs departure of newly refurbished Enterprise Express service to Belfast (breakfast/snack car available). On arrival in Belfast your tour host provides you with tickets for the Hop-on-Hop-off City Tour. Use this ticket to take you to Titanic Belfast, a monument to Belfast's maritime heritage on the site of the former Harland & Wolff shipyard in the city's Titanic Quarter where the RMS Titanic was built. Moored very close to the Titanic Visitor Centre is the very last original White Star Line ship; the SS Nomadic now open to the public (optional). Your Hop On Hop Off tour ticket will take you to Great Victoria Station for your train to Derry at 15.10 (3.10pm). Enjoy one of the great rail journeys of Ireland as your train passes along the spectacular North Atlantic Coastal route from Coleraine to Derry or as it is known "The Maiden City".on the banks of the River Foyle. On arrival in Derry at 17.25 (5.25pm) you will enjoy a private transfer across the border into Co. Donegal and on to beautiful Lough Eske and the wonderful five star standard hotel resort of Harvey's Point surrounded by the Hills of Donegal. Check in and enjoy a lovely dinner on your first night.

#### Day 2

After a full irish breakfast, relax and enjoy the luxury of Harvey's Point perhaps enjoy a cookery demonstration, wine tasting (Tuesdays and Thursdays) or book a treatment. Lots of lovely walks in the beautiful surroundings of the Blue Stack Mountains. Enjoy dinner, (cabaret dinner on Wednesday nights).

#### Day 3

After breakfast and check out your transfer takes in Ireland's highest cliffs at Slieve League and a visit to Yeat's grave at Drumcliffe, and on to Sligo where we join our train for Dublin arriving in Connolly Station at 18.00 (6pm).

Departs Mon/Wed/Fri.

**PRICE: €799 pps Mon/Wed**  
**€899 pps Friday**

Operates April to October.

Minimum booking 2 adults sharing.



## Four Day Tour DH37

### The Grand Atlantic

Check in Dublin Heuston Station for 07.00hrs departure of InterCity train to Cork (breakfast/snack car available). Enjoy a visit to the world renowned Blarney Castle & Gardens and the Queenstown Story at Cobh, the Titanic's last port of call and the rescue harbour for the Lusitania survivors in 1915. After a scenic train journey through the ancient Irish landscape dotted with castles, we transfer by coach to Blarney Castle and Village where we can kiss the famous Blarney Stone known as the "Stone of Eloquence". Enjoy shopping time and lunch (not included) at Blarney Woollen Mills before returning to Cork for a short City Tour and a visit to the famous English Market. We then visit Cobh – the embarkation point for generations of Irish emigrants to the new world including passengers for the Titanic. Experience the "Queenstown Story". Enjoy a scenic rail journey from Cobh to Cork for transfer to Killarney. Overnight in Killarney four star standard hotel.

#### Day 2

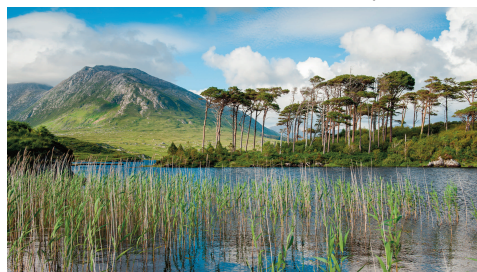
Experience the world renowned Ring of Kerry with its overwhelming mountains and seascapes is one of Ireland's most scenic delights. We travel by coach around the 100mile/179km long Ring of Kerry where every bend reveals some of the most spectacular scenery in Ireland set between the mountains of Kerry 'The Macgillycuddy's Reeks' and the Wild Atlantic coastline. Our day starts in Killarney as we then sweep along the north side of the Iveragh peninsula. Then it's onto the south side, through the villages of Waterville and Sneem, and into the pristine Killarney National Park. Enjoy views of The Skellig Islands where Star Wars "The Force Awakens" was recently filmed. Then we drop down alongside the Black Valley and Moll's Gap, stopping at Ladies View. Lunch stop at traditional Irish pub on this scenic journey (not included). We return to Killarney for your second overnight stay.

#### Day 3

07.30hrs transfer by road from Killarney to Limerick passing through the lovely village of Adare. In Limerick we have a short tour of the treaty city and setting for the movie "Angela's Ashes". We head north to Bunratty Castle and Folk Park. Our next stop is at a traditional Irish pub, O'Connor's of Doolin, with its reasonable priced seafood and pub grub - try the chowder (not included). It is a short drive from here to the majestic Cliffs of Moher; from here we enter the unique lunar landscape of the Burren rounding Black Head before heading along the shores of Galway bay (our route is regarded as one of Europe's top ten coastal drives). Overnight in Galway City three/fourstar hotel.

#### Day 4

10.00hrs depart Galway for tour of Connemara, including Kylemore Abbey & Gardens after which we depart Galway by train to Dublin. Arriving at Dublin Heuston Station 21.45hrs (9.45pm).



### THE ESSENTIALS

- Departs :** Monday to Thursday and Saturday
- Price:** Adult Low €629pps High €659 pps  
High Season: June to September
- Check-in:** For 07.00am train to Cork
- Departure Point:** Information Desk – Heuston Station
- Return:** 21.45 (9.45pm)
- Included:**
- Rail Travel - Dublin/Cork, Cork to Killarney, Galway to Dublin in reserved cars/seats
  - All Accommodation
  - Hosted tour throughout
  - Blarney Castle and Gardens
  - Cobh Heritage Centre
  - Ring of Kerry Tour
  - Bunratty Castle and Folk Park
  - Cliffs of Moher
  - Tour of Connemara
  - Kylemore Abbey and Gardens

## One Day Tour DH01

### Waterford Crystal, Kilkenny City, County Tipperary and the Suir Valley

#### ITINERARY

Check-in **Dublin Heuston** Station (Information Desk) for 07.25 (snacks available) departure of intercity train to **Kilkenny**. We arrive at 09.00 (9.00am) after a scenic rail journey and we take a guided tour of **Kilkenny City** known as "The Marble City", after the tour you will have plenty of time to explore and perhaps visit **Kilkenny Castle** overlooking the River Nore (admission not included) and the nearby **Kilkenny Design Centre**.

We depart Kilkenny at 11.40 to

**Waterford City**. On arrival we transfer to Waterford Crystal and have time for lunch (not included) followed by a tour of the Waterford Crystal Visitors Centre (included). The tour then departs **Waterford** by train at 16.25 arriving in **Dublin Heuston** at 20.00 (8.00p.m) (snacks available). Our return journey by train is via the scenic **Suir Valley** through the heart of **County Tipperary**, we change trains at Limerick Junction to join our express back to **Dublin**.

#### Departs Daily - Monday to Saturday

Overnight option (4\*standard hotel) available in Waterford - please ask for details.



## THE ESSENTIALS

**Departs :** Monday to Saturday

**Price:** Adult €109pps Student €98pps

**Check-in:** For 07.25am train to Waterford

**Departure Point:** Information Desk – Heuston Station

**Return:** 20.00 (8.00pm)

**Included:**

- Rail Travel - Dublin to Kilkenny, Kilkenny to Waterford, Waterford to Dublin via Limerick Junction in reserved cars/seats
- Hosted tour throughout
- Guided tour of Kilkenny City, Waterford Crystal
- All transfers



## CHECK-IN POINT DUBLIN RAIL STATION

Our Tour Hosts, in Bright Yellow jackets are always on hand to welcome you and to oversee the smooth running of all tour arrangements.







## **Six Day Tour DH371110**

### **The All Ireland Tour**

Check in Dublin Heuston Station for 07.00hrs departure of InterCity train to Cork (breakfast/snack car available). Enjoy a visit to the world renowned Blarney Castle & Gardens and the Queenstown Story at Cobh, the Titanic's last port of call and the rescue harbour for the Lusitania survivors in 1915. After a scenic train journey through the ancient Irish landscape dotted with castles, we transfer by coach to Blarney Castle and Village where we can kiss the famous Blarney Stone known as the "Stone of Eloquence". Enjoy shopping time and lunch (not included) at Blarney Woollen Mills before returning to Cork for a short City Tour and a visit to the famous English Market. We then visit Cobh – the embarkation point for generations of Irish emigrants to the new world including passengers for the Titanic. Experience the "Queenstown Story". Enjoy a scenic rail journey from Cobh to Cork for transfer to Killarney. Overnight in Killarney four star standard hotel.

#### **Day 2**

Experience the world renowned Ring of Kerry with its overwhelming mountains and seascapes is one of Ireland's most scenic delights. We travel by coach around the 100mile/179km long Ring of Kerry where every bend reveals some of the most spectacular scenery in Ireland set between the mountains of Kerry 'The Macgillycuddy's Reeks' and the Wild Atlantic coastline. Our day starts in Killarney as we then sweep along the north side of the Iveragh peninsula. Then it's onto the south side, through the villages of Waterville and Sneem, and into the pristine Killarney National Park. Enjoy views of The Skellig Islands where Star Wars "The Force Awakens" was recently filmed. Then we drop down alongside the Black Valley and Moll's Gap, stopping at Ladies View. Lunch stop at traditional Irish pub on this scenic journey (not included). We return to Killarney for your second overnight stay.

#### **Day 3**

07.30hrs transfer by road from Killarney to Limerick to visit Bunratty Castle, Cliffs of Moher, 2 overnights in Galway City in three star standard hotel.

#### **Day 4**

Depart via Aer Arann mini coach for transfer to Connemara Airport for your short flight to Inis Mór, the largest of the Aran Islands, we enjoy a tour of the Island including a visit to the fortress of Dún Aengus. After return flight we have another overnight in the same hotel in Galway City.

#### **Day 5**

10.00hrs depart Galway for tour of Connemara, including Kylemore Abbey & Gardens after which we depart Galway by train to Dublin. Overnight in Dublin City Centre Hotel.

#### **Day 6**

Check in Dublin Connolly Station for 07.35hrs departure of newly refurbished Enterprise express service to Belfast (breakfast/snack car available). The famous Causeway Coastal Route Drive, the Giants Causeway, Carrick-a-Rede Rope Bridge all in one day! We arrive in Belfast and then travel by coach north from Belfast along the famous Antrim Coast Road through Ballycastle en-route to the Carrick-a-Rede Rope Bridge. The famous Bushmills Visitor Centre is our lunch stop (not included). We continue along the Causeway Coast, one of the most magical drives in Europe, to the stunning Giant's Causeway. Spend some time climbing over the ancient stones and enjoying the myths and legends associated with this famous attraction. Next we enjoy a photo stop at the huge bastion of Dunluce Castle, then back to Belfast for a short tour before returning back to Dublin. Arriving at Dublin Connolly Station 22.15hrs (10.15pm). Overnight in Dublin City.

## THE ESSENTIALS

- Departs :** Monday to Thursday and Saturday
- Price:** Adult Low €1059pps High €1119pps  
High Season: June to September
- Check-in:** For 07.00am train to Cork
- Departure Point:** Information Desk – Heuston Station
- Return:** 22.15 (10.15pm)
- Included:**
- Rail Travel - Dublin/Cork, Cobh / Killarney, Galway /Dublin, Dublin/Belfast in reserved cars/seats
  - Hosted tour throughout
  - All Accommodation
  - Blarney Castle and Gardens
  - Cobh Heritage Centre
  - Ring of Kerry Tour
  - Bunratty Castle and Folk Park
  - Cliffs of Moher
  - Flight to Inis Mór
  - Tour of Connemara
  - Kylemore Abbey and Gardens
  - Giant's Causeway
  - Carrig-a-rede rope bridge



### Shorter Day Tour DC08

## The Wicklow Mountaineer

### The Wicklow Mountains, East Coast, Avoca (Ballykissangel) and Glendalough

A lovely fully guided tour into the **Wicklow Mountains** to visit Ireland's most famous village, **Avoca**, otherwise known as "**Ballykissangel**", situated in the beautiful **Vale of Avoca** and also the magnificent ancient monastic city of **Glendalough** (valley of the two lakes).

Departs **Dublin Connolly Station** 09.40 by train, arrives **Arklow** at 11.10, then by road to **Avoca**: 11.30 – 12.45, **Glendalough**: 13.30-14.45, returns to **Dublin** by train at approx 16.45.

#### ITINERARY

Check in **Dublin Connolly** station for 09.40 departure of train to **Arklow**. A fantastic tour during which you will enjoy a spectacular train journey south by **Killiney Bay**, around **Bray Head** and along the beautiful East Coast to **Wicklow** where we swing west into the Mountains. Visit the famous village of **Avoca (Ballykissangel)** in the hit TV series). See hand weaving at the Woollen Mills – great shopping & time for lunch – or maybe a pint at Fitzgeralds famous pub. Visit the ancient Monastic city of **Glendalough** (valley of the two lakes) all in beautiful mountain scenery! We return to **Dublin** by train arriving 16.45 (4.45pm) approx. **Ideal for cruise passengers.**

**Scenic rail journey as seen on BBC TV Great Rail Journeys - with Michael Portillo.**

## THE ESSENTIALS

- Departs :** Monday to Saturday
- Price:** Adult €59pps Student €53
- Check-in:** For 09.40am train to Rosslare Europort
- Departure Point:** Dublin Connolly Station
- Return:** 16.45 (4.45pm)
- Included:**
- Rail Travel - Dublin to Arklow, in reserved cars/seats, Bray to Dublin
  - Hosted tour throughout
  - Admission to Avoca Handweavers
  - Admission to Glendalough
  - All transfers



Four Day Tour LEO9

## The London to Dublin Package

Visiting London? Why not add a short tour to The Emerald Isle the Eco-friendly way without having to fly or drive!

Travel to Ireland along the classic route by rail through the heart of England, along the lovely North Wales Coast and take a short sea trip on world's largest cruise ferry to Dublin City Centre – all in one day! We include three nights 4 star standard City Centre Hotel and a hop-on hop-off city tour so you can explore Dublin's fair city at your leisure.

PLEASE NOTE: Rail/Ship ticket back to London valid for ONE FULL MONTH from first use. Why not consider adding a Railtour from Dublin one day to nine day to complete your Ireland travel experience.

\*Virgin Trains First Class Upgrade from London available from €99 – enquire for details. This tour package is available one way from London.



IRISH FERRIES



### THE ESSENTIALS

- Departs :** 09.10 Monday to Friday, Saturday at 08.50
- Price:** Adult Low €599pps High €699 pps  
Student Low: €539pps High €629pps  
High Season: June to September
- Check-in:** Mobility Assistance Reception on main concourse of London Euston Station
- Departure Point:** London Euston Station
- Included:**
- All travel (rail and ship) London to Dublin return (First Class upgrade available)
  - Transfers from/to Dublin Ferry Port
  - Three nights 4 Star standard City Centre Hotel in Dublin - room only
  - Hop-on Hop-off Dublin City tour (2 day ticket)
  - All taxes and service charges



*Emerald Isle Express  
approaching Killarney*



*Photo courtesy of  
Brian Solomon*

## **THE EMERALD ISLE EXPRESS – DCST2017 THE ORIGINAL RAIL CRUISE AND CASTLE TOUR**

*An exclusive rail land cruise and castle tour through Ireland on your own special private heritage train. Overnighing in luxury five star Irish Castle, City and Country Hotels. This all-inclusive tour is limited to 50 guests. A unique Ireland vacation experience to remember!*

**DEPARTURE ON SUNDAY SEPTEMBER 24TH 2017**

**DAY 1: GATHERING DAY - DUBLIN**

*Gathering Day in Dublin. Individual transfers from the airport to your hotel. Welcome reception, dinner and overnight stay in the five star Merrion Hotel, in the heart of Dublin city.*

**DAY 2: DUBLIN TO WATERFORD**

*Champagne reception at Connolly Station before boarding the Emerald Isle Express. Cruise by rail down Ireland's scenic east coast through counties Wicklow and Wexford to Waterford City. Private visit to Waterford Crystal, dinner and overnight stay in Waterford Castle and lodges.*

**DAY 3: WATERFORD TO CORK**

*By rail through the beautiful Suir Valley in County Tipperary to Cork and a visit to Blarney Castle and Cork City's English Market. Overnight stay in the five star Fota Island Resort.*

**DAY 4: CORK TO KERRY**

*Visit Cobh, Titanic's last port of call and then rail to Killarney for a tour of The Ring of Kerry. Dinner and overnight in the five star Killarney Park Hotel situated in the centre of Killarney.*

**DAY 5: FREE DAY**

*A day of leisure in Killarney with optional rail tour to Tralee for a tour of the magnificent Dingle Peninsula where Ryan's Daughter was filmed. Dinner and traditional Irish entertainment in downtown Killarney.*

**DAY 6: KILLARNEY TO ENNIS**

*By rail to Ennis via Limerick and a tour to the stunning Cliffs of Moher on Ireland's Wild Atlantic Way, dinner and overnight at Dromoland Castle.*

**DAY 7: GALWAY TO DUBLIN**

*By Rail from Ennis to Galway then tour of spectacular Connemara, lunch at the beautiful Ballynahinch Castle Hotel. Return to Galway City and rail across Ireland to Dublin with dinner and entertainment on board. Overnight in Dublin's five star Merrion Hotel.*

**DAY 8 : DEPARTURE DAY**

*Scattering Day. Individual transfers from your hotel to Dublin Airport. Extra nights available in Dublin on request if you would like to explore fair Dublin city.*

**WHAT'S INCLUDED:**

- Personal meet & greet at Dublin Airport
- Transfers to & from Airport to your 5\* Merrion Hotel Dublin
- Welcome reception at the Merrion Hotel
- Exclusive Dublin City Tour
- All meals included
- Morning coffee & afternoon tea each day
- All drinks on the train
- Traditional Irish Night in Killarney
- Side tours to Waterford Crystal, Blarney Castle, Cobh Heritage, Ring Of Kerry, Cliffs of Moher Galway Bay & Connemara
- Renowned Railtours Ireland Host throughout
- All your luggage taken care of from start to finish
- All taxes and service charges

**Price: €5,499 per person sharing  
(Single Room Supplement: €1,499)**

Visit - [railtoursireland.com/railcruiseandcastletour](http://railtoursireland.com/railcruiseandcastletour)



## Terms & Conditions

### THE FOLLOWING STANDARD TERMS AND CONDITIONS APPLY TO ALL BOOKINGS

Railtours Ireland First Class (RTIFC) is dedicated to providing a professional and personalised service. It is our intention to operate all tours as advertised. However, due to operational reasons it may, on occasion, be necessary to alter certain itineraries. Railtours Ireland cannot be held liable in the event of an attraction being closed. Student discounts can only be given if requested at time of booking. No discounts can be given retrospectively.

Railtours Ireland First Class cannot be held responsible for customers not having the correct visa documentation to enter Ireland or Northern Ireland.

Railtours Ireland First Class reserves the right to cancel tours if industrial or other action affects any of the components which make up our tour or if there is insufficient demand.

For any tours that include a trip to the Aran Islands the following condition applies: Should weather conditions be such as to curtail flights you will be taken on an alternative tour to Connemara and refunded the difference. No further refund available should you decide not to go to Connemara for any reason.

Railtours Ireland First Class cannot be held responsible for any damage, loss, accident, delay, irregularity, injury to person or property whatsoever or howsoever caused arising out of or in connection with excursion, tour or transfer. Passengers travel at their own risk and our liability for any claim whatsoever is limited only to the price of the tour.

#### **CANCELLATION POLICY - "If you miss the train, you miss the tour"**

**DAY TOURS:** 24 hours' notice prior to the departure time must be given in order to get a refund on any day tour.

**EXTENDED TOURS:** 48 hours' notice prior to the departure time if the tour includes accommodation (Except for The Emerald Isle Express tour where 60 days' notice is required).

**ALTERATIONS:** Once reservations are confirmed by RTIFC and after a grace period of 72 Hours (3 days) any alterations to the reservation of extended tours (any tours with accommodation) including but not limited to, change of date, tour change, will be subject to a fee of EURO 49.00 per booking.

#### *"If you miss the train, you miss the tour"*

All refunds are subject to a 10% administration charge. We reserve the right to refuse admission to any tour and to terminate a tour if circumstances demand.

**UNUSED TOUR ARRANGEMENTS:** RTIFC cannot make refunds or exchanges for unused accommodation, services or features of any tour unless agreed to prior to departure.

**CLAIMS OR DISPUTES:** RTIFC take complaints very seriously and we ask if you are not satisfied with any aspect of our service that you submit your complaint in writing no later than 28 days after the end of your tour. Involving social media before contacting RTIFC will automatically void any further responsibility on behalf of the company.

**HOTELS:** All hotels are subject to availability at time of booking. Please note that due to a critical hotel shortage in Ireland we may on occasion use hotels just outside the city or town centre. This can be the difference between confirming or rejecting your booking, however we will always let you know prior to final confirmation.

**LUGGAGE ALLOWANCE:** There is no limit to the amount of luggage and there are luggage facilities on board trains & coaches and we try to keep luggage transfers between trains and coaches to a minimum. However it is strongly recommended that large excess amounts of luggage be stored, perhaps, at your Dublin hotel for the duration of your railtour.

**WHEELCHAIR FRIENDLY:** As long as the individual has some mobility then our tours would be suitable. The trains are wheelchair friendly in Ireland however the buses/coaches are not. The guest would have to be able to climb the steps on to the bus. It is with regret that we cannot accommodate Mobility Scooters on our tours.

All US\$ prices displayed on our website are approximate and subject to fluctuations in exchange rates.

#### **PLEASE NOTE**

Online Tour Operators / Tour / Inward Operators guests receive the following in relation to overnight tours:

Belfast Hotel 4\* Standard with Breakfast

Galway 3\* Boutique and 4\* Standard Hotel with Breakfast

Killarney - B+B accommodation with Breakfast

Dublin - 4\* Standard accommodation with no Breakfast / no Breakfast on train included

(Accommodations are booked on a per person sharing option and single supplements are charged by accommodation providers which in turn will be applied to bookings)

Iarnród Éireann/CIE shall in no way be responsible for the activities, acts or defaults of Railtours Ireland and cannot be held responsible or liable for any damage (whether direct, indirect, incidental, consequential), loss, accident, delay, irregularity, death, injury to person or property howsoever or whatsoever caused arising out of or in connection with the provision of the services offered by Railtours Ireland or in any manner whatsoever save to the extent of any liability incurred by Iarnród Éireann/CIE pursuant to the provision by it of rail services subject to the terms and conditions of the CIE Bye-laws and the Iarnród Éireann Conditions of Carriage of Passengers and their Luggage.

Iarnród Éireann/CIE is not responsible or liable for the accuracy of any information, data or opinion or statements made on this promotional material/website. Iarnród Éireann/CIE disclaims all liability which might arise out of, or in connection with the use or reliance on the content or performance of, or information on or services provided on or through this promotional material/ website.

# WHY CHOOSE RAILTOURS IRELAND *First Class!*

- ✓ Car Free - Care Free
- ✓ First Class service all the way
- ✓ Reserved cars / seats on the train
- ✓ Railtours Ireland Host throughout
- ✓ Visitor attraction entry tickets included
- ✓ Four star standard hotels
- ✓ Open return tickets valid for 1 month  
(Stay on after your tour finishes in Killarney, Galway or Belfast)
- ✓ All taxes and service charges included

## BOOK TODAY & TRAVEL TOMORROW

**Hotel:** Your concierge / reception will make your booking

**Online:** [railtoursireland.com](http://railtoursireland.com)

**Phone:** +353 1 856 0045

Toll Free:(USA & Canada)

1877 451 4783

Freephone:(UK):  
0800 328 2899

**Visit Us:** Railtours Ireland  
First Class Welcome  
Centre

16 Amiens Street, Dublin D01XD21 Ireland.  
(directly opposite Connolly Station)

**Email:** [info@railtoursireland.com](mailto:info@railtoursireland.com)



Photo courtesy of Fred Dean



Hosted Railtours for  
the Independent Traveller  
[RAILTOURSIRELAND.COM](http://RAILTOURSIRELAND.COM)

In association with



**Iarnród Éireann**  
**Irish Rail**



Valid from Jan 2017